

2021– 33 Referatsaker

- a) COVID-19 impact on noise levels at Tisler reef. Rapport fra Laurence H. De Clippele, The University of Edinburgh.
Studie av støynivået ved Tisler-revet; fant et stort fall i støyen etter at fergen sluttet å seile mellom Sverige og Norge. Bør vi motivere fergeselskapene til å endre ruten rundt revet i stedet for over det ...?
Vedlegg: Rapport
- b) Svar på spørsmål om retningslinjer for private gaver og bidrag til forvaltningen av verneområder
Vedlegg: Brev fra Miljødirektoratet datert 29.06.21 til orientering
- c) Rapport fra Oslo Sportsdykkeklubb (OSDK) sommerleir på Akerøya 2021
OSDK sommerleir på Akerøya ble i 2021 gjennomført i perioden 16-25 juli 2021. I år som i fjor var det omstendigheter rundt Covid-19 som gjorde at det generelt var mye folk innom på Akerøya. På dagene med fint vær kom det teltgjester med kajakk og båt som teltet på stranden og rundt oss i leiren uten at det ble registrert noe negativt av noe slag.
Vedlegg: Rapport
- d) Rapport Spjærbekken
Store deler av den sjørretførende delen av Spjærbekken ble gravd ut ved en feiltagelse nå i sen september. Beskrivelse i vedlagte rapport.
Rosareke Foreningen For Sjørretens Venner med samarbeidspartnere skal nå restaurere de ødelagte områdene i sin helhet.
Dette prosjektet er et samarbeidsprosjekt mellom:
- Rosareke Foreningen for Sjørreten Venner. **Prosjektleder.**
 - NMBU ECOL350 Restaureringsøkologi. Bidragsyter
 - NJFF Sjørretriket. Bidragsyter.
 - Mesta AS. Bidragsyter.
 - Hvaler JFF. Blir invitert med på prosjektet.

Rosareke i samarbeid med elever ved NMBU ECOL350 Restaureringsøkologi utformer i disse dager en total rehabiliteringsplan av de ødelagte områdene nevnt i rapport. Dette blir et unikt prosjekt der elevene skal bli med på hele prosessen fra ødelagt til ferdig restaurert sjørretbekk. NJFF sjørretriket henger seg også på prosjektet. NJFF skal følge prosjektet fra start til ferdigstilling. Her skal det lages videoer og reportasjer til bruk i opplæring. Når bekken er ferdig, vil dette strekket bekk kunne brukes til blant annet naturveiledning for Ytre Hvaler Nasjonalpark. Dette skal bli et godt eksempel der folk kan se nytten og verdien av

naturrestaurering. En bekk Hvaler kommune og Nasjonalparken kan være stolt av. **Ferdigstilling av område markert i grønt i bilde nedenfor er planlagt til august 2022.**

Rosareke Foreningen for sjøørretens venner vil også lage en habitatforbedrende plan for områdene over aktuelle streking (Oransje strek i bilde nedenfor). Planlagt ferdigstilling av dette området er satt til **august 2023**. Totalt vil ca **400 meter av Spjærbekken** løftes opp til en **økologisk god tilstand**. Dette er i god tråd med forvaltningsplanen for Oslofjorden.

Berørte grunneiere vil bli informert, habitatforbedrende plan blir sendt til statsforvalter for godkjenning. Her blir ingenting gjort uten nødvendige tillatelser.

Vedlegg: Rapport

Sekretariatets forslag til vedtak:

Tatt til orientering

Nasjonalparkstyrets vedtak

Settes inn



Measuring Sound at a Cold-Water Coral Reef to Assess the Impact of COVID-19 on Noise Pollution

Laurence H. De Clippele^{1*} and Denise Risch²

¹ Changing Oceans Research Group, School of GeoSciences, University of Edinburgh, Edinburgh, United Kingdom,

² Scottish Association for Marine Science (SAMS), Oban, United Kingdom

OPEN ACCESS

Edited by:

Edward Urban,
Scientific Committee on Oceanic
Research, United States

Reviewed by:

Mike Van Der Schaar,
Universitat Politècnica de Catalunya,
Spain

Matthew Wale,
Edinburgh Napier University,
United Kingdom

*Correspondence:

Laurence H. De Clippele
laurence.de.clippele@gmail.com

Specialty section:

This article was submitted to
Marine Ecosystem Ecology,
a section of the journal
Frontiers in Marine Science

Received: 01 March 2021

Accepted: 20 May 2021

Published: 24 June 2021

Citation:

De Clippele LH and Risch D
(2021) Measuring Sound
at a Cold-Water Coral Reef to Assess
the Impact of COVID-19 on Noise
Pollution. *Front. Mar. Sci.* 8:674702.
doi: 10.3389/fmars.2021.674702

This study compares the noise levels at the cold-water coral Tisler reef, before and after the closure of the border between Norway and Sweden, which occurred as a direct result of the COVID-19 pandemic. The Tisler reef is a marine protected area located under a ferry “highway” that connects Norway and Sweden. Cold-water coral reefs are recognised as being important hotspots of both biodiversity and biomass, they function as breeding and nursing grounds for commercially important fish and are essential in providing ecosystem functions. Whilst studies have shown that fishery, ocean warming, and acidification threaten them, the effects of noise pollution on cold-water coral reefs remains unstudied. To study the severity of noise pollution at the Tisler reef, a long-term acoustic recorder was deployed from 29 January 2020 until 26 May 2020. From 15 March COVID-19 lockdown measures stopped passenger vessel traffic between Norway and Sweden. This study found that the overall noise levels were significantly lower after border closure, due to reduced ferry traffic, wind speeds, and sea level height. When comparing the median hourly noise levels of before vs. after border closure, this study measured a significant reduction in the 63–125 Hz 1/3 octave band noise levels of 8.94 ± 0.88 (MAD) dB during the day (07:00:00–19:59:59) and 1.94 ± 0.11 (MAD) dB during the night (20:00:00–06:59:59). Since there was no ferry traffic during the night, the drop in noise levels at night was likely driven by seasonal changes, i.e., the reduction in wind speed and sea level height when transitioning from winter to spring. Taking into account this seasonal effect, it can be deduced that the COVID-19 border closure reduced the noise levels in the 63–125 Hz 1/3 octave bands at the Tisler reef by 7.0 ± 0.99 (MAD) dB during the day. While the contribution of, and changes in biological, weather-related and geophysical sound sources remain to be assessed in more detail, understanding the extent of anthropogenic noise pollution at the Tisler cold-water coral reef is critical to guide effective management to ensure the long-term health and conservation of its ecosystem functions.

Keywords: COVID-19, cold-water coral reef, passive acoustic monitoring, noise pollution, soundscape, passenger vessels, marine ecosystem

INTRODUCTION

Coral reefs are not restricted to the shallow tropics, they also thrive in the cold aphotic waters at depths of 40–2,000 m (Davies et al., 2008; Morato et al., 2020; Sundahl et al., 2020), with some cold-water corals being able to grow as deep as 6,000 m (Roberts et al., 2009). Cold-water corals occur throughout the world's oceans and form complex reef ecosystems that can be 10–100s m in height, constructed by only a handful of scleractinian coral species [*Lophelia pertusa* (Recently synonymised to *Desmophyllum pertusum* (Addamo et al., 2016)), *Madrepora Ocolata*, *Solenosmilia variabilis*, *Oculina varicose*] (Roberts et al., 2009). The extensive reef structures they build can be of considerable age, with nearshore reefs in Norway dating back to 8,600 years before present (Wisshak et al., 2005) and deeper off-shore cold-water coral carbonate mounds likely being thousands to millions of years old, with some continuously growing for at least the last circa 11,000 years (Roberts et al., 2006; Wheeler et al., 2007; Mienis et al., 2009; Van der Land et al., 2014).

In contrast to tropical corals, cold-water corals lack the presence of symbiotic zooxanthellae algae, giving them white to orange coloured polyps (Hennige et al., 2014; De Clippele et al., 2019; **Figure 1**). They opportunistically feed on dissolved organic matter, bacteria, algae, and zooplankton (Mueller et al., 2014). They are ecologically important as hotspots of biomass (De Clippele et al., 2021) and biodiversity (Buhl-Mortensen et al., 2010; Henry et al., 2010; Kazanidis et al., 2016), function as breeding and nursing grounds for fish (Baillon et al., 2012), sharks and skates (Henry et al., 2013, 2016), are paleoclimatic archives (Douarin et al., 2014) and are essential in providing ecosystem functions such as carbon and nitrogen recycling (van Oevelen et al., 2009; Cathalot et al., 2015; Rovelli et al., 2015; de Froe et al., 2019; Maier et al., 2020; De Clippele et al., 2021).

Due to recent advances in technology, there has been a dramatic increase in our understanding of these diverse

ecosystems, as well as growing evidence that many cold-water coral habitats have been degraded by bottom trawling and are threatened by ocean warming and acidification (Wheeler et al., 2005; Clark et al., 2006; Roberts et al., 2009; Hennige et al., 2015; Sweetman et al., 2017; Morato et al., 2020).

Since the industrial revolution, the number of powered vessels has grown rapidly, bringing with them a new type of pollution, noise pollution (Andrew et al., 2002, 2011; Frisk, 2012; Simmonds et al., 2014; Duarte et al., 2021). A recent review summarises the current knowledge on how the prevalence and intensity of anthropogenic noise pollution can affect the behaviour, physiology and ecology of tropical coral reef organisms (Ferrier-pages et al., 2021). For example, noise pollution can cause sensory confusion, or mask communication among reef animals (Simpson et al., 2011; Carroll et al., 2017; Stanley et al., 2017), which can produce sounds during reproductive behaviour, territorial defence and predator deterrence (Myrberg and Fuiman, 2002). However, due to their often remote and inaccessible nature, the prevalence, noise levels, and effects of noise pollution have not been studied yet for cold-water coral reefs.

Acoustic landscapes, or soundscapes, are composed of biological, geophysical, and anthropogenic sounds. In healthy tropical coral reefs, the soundscape is typically dominated by biological sounds produced by, for example, grunting fish and snapping shrimps (Piercy et al., 2014). In the last two decades advances in technology have allowed us to study cold-water coral reefs, and simultaneously noise pollution from ships have increasingly affected marine soundscapes. While the effects of noise pollution on terrestrial ecosystems have been recognised, the effects on marine ecosystems are still widely understudied (Duarte et al., 2021). Anthropogenic noise, including vessel noise, can affect all frequencies (Duarte et al., 2021), but the 1/3–octave bands centred at 63, 100 and 125 Hz have often been used as indicators of low-frequency vessel noise (Tasker et al., 2010; Peng et al., 2015; Merchant et al., 2016; Thomson and Barclay, 2020). These frequency bands were selected as they are generally less influenced by pseudo flow noise and wind noise (Wenz, 1962; Strasberg, 1979; Bassett et al., 2014; Peng et al., 2015; Merchant et al., 2016).

A global slowdown in private and commercial shipping traffic as a measure to mitigate the threat of COVID-19 to human life and welfare has inadvertently resulted in a natural “before and after impact” experiment offering unanticipated insight into how human behaviour affects ocean noise levels. Already in the first quarter of 2020, large negative trends of 2.3–7.1 dB at 100 Hz have been observed near the port of Vancouver, Canada, coinciding with a 21.5% reduction in Automatic Identification System (AIS) ship-tracking transmissions (Thomson and Barclay, 2020). In terrestrial rural and urban environments, drops of 3.6–7.4 dB in the ambient noise levels led to positive changes in the communication distance and salience of the performance of the songs of birds (Derryberry et al., 2020). These drastic changes shown for these two habitats raise the question of what the extent and effect is of the reduction of anthropogenic noise pollution

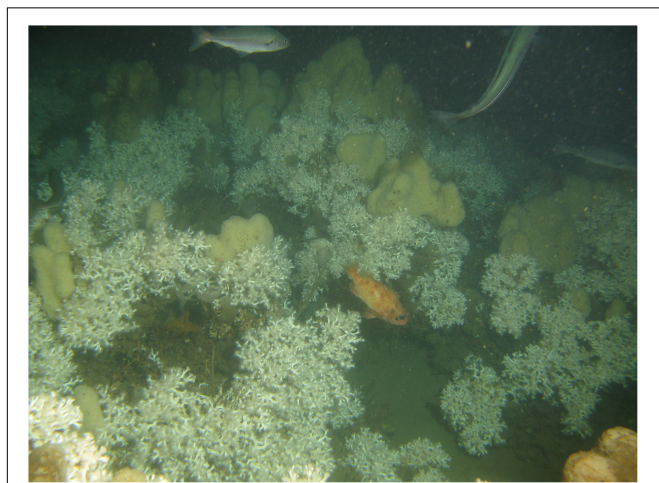


FIGURE 1 | Dense coverage of the cold-water scleractinian coral *Lophelia pertusa* at the Tisler reef with the sponge *Mycale lingua* growing within its framework, the fish *Sebastes* sp. and the fish *Pollachius* sp. (Saithe).

due to COVID-19 in other ecological systems, including cold-water coral reefs, which are currently understudied in terms of their soundscape.

This study quantified the prevalence and the noise levels at the Tisler cold-water coral reef in Norway before and after the international border between Sweden and Norway closed on 15 March 2020 as a result of the COVID-19 pandemic.

MATERIALS AND METHODS

Study Area

The Tisler cold-water coral reef lies in the north-eastern part of the Skagerrak in the Hvaler area in Norway (Lavaleye et al., 2009; **Figure 2**). North of Tisler Island, the reef grows in a NW–SE direction in the Ytre Hvaler, a 48-km-long ocean channel through which Atlantic water of around 8°C flows (Wagner et al., 2011; Guihen et al., 2013; De Clippele et al., 2018). The reef is approximately 8,600–8,700 year old (Wisshak et al., 2005), 1.2 km long, 200 m wide and has live coral growing between 70 and 160 m depth (Lavaleye et al., 2009; De Clippele et al., 2018). The Tisler Reef has been protected against bottom-impacting fishing techniques by Norwegian fishery regulations since 2003 (Fosså et al., 2010).

Acoustic Data Analysis

We established a recording station at 120 m depth on the southeast side of the Tisler reef (Longitude: 10.970683, Latitude: 58.9947) to collect long-term passive acoustic underwater recordings from 12:00:00 (CET) 29 January 2020 to 00:45:01 (CEST) 26 May 2020. The local time switched from CET to CEST on 29 March 2020. The SoundTrap ST500 long-term recorder (Ocean Instruments, Auckland, New Zealand) used for this study, sampled at 96,000 Hz, providing an effective analysis bandwidth of 20–60,000 Hz. The sensitivity of the whole system chain (recorder, hydrophone and applied gain) was -175.5 dB re 1 V/ μ Pa at 250 Hz. Recordings were saved in the lossless X3

compressed file format (Johnson et al., 2013). The recorder was fixed at approximately 3.5 m above the seafloor using submersible floats attached to a deep-sea acoustic release canister (ARC) (RS Aqua, United Kingdom). The ARC allowed for a quick recovery without leaving the anchor behind in the Tisler reef, a marine protected area. The acoustic recorder collected data continuously for 118 days. After the recorder was retrieved, waveform audio files were generated using the SoundTrap Host for further analysis. Visual inspections with a remotely operated vehicle (ROV) indicated the ST500 was surrounded by rubble, dead coral framework, and live coral colonies.

The sound pressure levels were further quantified by 1/3–octave bands (TOB) from 20 to 20,000 Hz using the “TOL” (Third Octave Levels) function in PAMGuide to describe distributions and trends in noise levels. For the statistical analyses, hourly medians of the TOBs were calculated in R using the openair package (Carlsaw and Ropkins, 2012).

Spectrograms (Window type: Hanning, 50%, hop size: 256, DFT size: 512 samples, grid spacing: 188 Hz) generated using Raven Pro 1.6.1 (K. Lisa Yang Center for Conservation Bioacoustics, 2019) were used to visually pinpoint the closest point of approach (CPA) of the ferries to the acoustic recordings.

Passenger Vessel Traffic

The Tisler reef is located under a ferry “highway” between Sandefjord (Norway) and Strömstad (Sweden). The recorder was located approximately 91 m from this ferry “highway.” Three types of ferries are used by two companies. The company ColorLine uses the M/S Colour Viking (capacity: 1,720 passengers, 370 cars) and, their second vessel, the world’s largest plug-in hybrid, runs on batteries to reduce its noise level (capacity: 2,000 passengers). The third vessel is run by Fjordline and is slightly smaller (capacity: 1,350 passengers). Unless there is a cancellation due to bad weather or docking periods, the ferries will sail up to 12 times a day above the reef (**Figure 2** and **Table 1**).

Due to the closure of borders between Norway and Sweden, as a result of the COVID-19 pandemic, there were no sailings

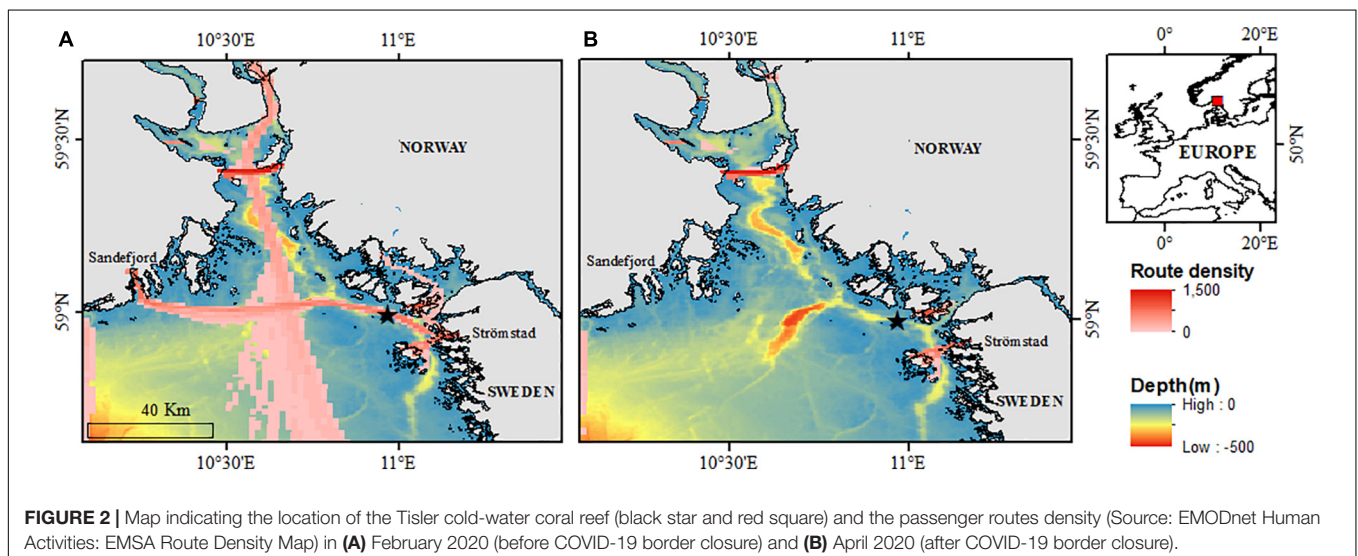


TABLE 1 | Departure times of the two ferry companies that sail between Sandefjord and Strömstad, 2020.

	Colorline	Fjordline
From Sandefjord to Strömstad	07:00, 10:00, 13:30, 17:00	08:30, 15:20
From Strömstad to Sandefjord	10:00, 13:40, 17:00, 20:00	12:00, 18:30

from March 15, 2020 to the present (May 2021) (**Figure 2A** vs. **Figure 2B**). In the period between 29 January and 15 March, consistent strong signals from the passing ferries, lasting for ~30 min, had an approximate CPA, as determined by visual inspection of the sound files, at 07:50, 09:25, 09:30, 11:03, 11:29, 13:09, 14:25, 16:17, 16:30, 17:52, 17:57, and 19:27 on each day of the week.

Route Density

The total and average monthly route density of marine vessels (i.e., passenger, fishing, cargo, tanking, and all other types) were calculated using the open source EMODnet Human Activities EMSA Route Density Maps. Route density maps were downloaded as .TIF format for February, March, April and May 2020 and imported in the ArcGIS 10.1, ESRI Software. The “Extract by mask” ArcGIS tool was used to clip these route density maps to an area of 100 km² around the Tisler reef. The ArcGIS “raster to point” tool was then used to create an attribute table from which the total and average monthly route density of marine vessels could be extracted and calculated.

Shipping Noise Indicators

While all the TOB can be affected by vessel noise (Hildebrand, 2009; McKenna et al., 2012), the ones centred at 63, 79, 100, and 125 Hz were used, as these are the current noise indicators of low-frequency vessel noise in an European management context (Dekeling et al., 2016; Garrett et al., 2016), and are less influenced by flow and wind noise (Wenz, 1962; Tasker et al., 2010; Peng et al., 2015; Merchant et al., 2016; Thomson and Barclay, 2020).

Environmental Variables

Hourly data on the wind speed (m/s) and sea level height (cm) were downloaded from the Nordkoster and Kungsvik SMHI meteorological stations¹. A categorical variable “ferry” was created, representing the hours at which the ferry would have their CPA to the recorder on the reef and were labelled as “ferry passage” vs. “no ferry passage” [i.e., 07:00, 09:00, 11:00, 13:00, 14:00, 16:00, 17:00, and 19:00 (CET)]. The latter was determined by checking repeated patterns of vessel passage over the reef in Raven Pro 1.6.1 (see section *Acoustic data analyses*).

Statistical Analyses

The 25th percentile, median, mean absolute deviation (MAD), and 75th percentile of the median hourly TOB sound pressure levels, were used to assess the change in noise levels before (29 January–14 March 2020) and during (15 March–26 May 2020) border closure in the statistical software R (R Development Core Team, 2010; Wickham, 2011).

¹smhi.se

The distribution of the response variables (TOB) did not follow a Gaussian distribution. Therefore the more flexible Generalised Linear Modelling (GLM) approach was used. The probability distributions of the noise levels analysed here belong to the exponential quasi-Poisson family (McCullagh and Nelder, 1989; Dobson and Barnett, 2008). The software R was used to perform the GLM. The GLM models were run four times for all TOB (25–15,849 Hz). Once for daytime recordings (07:00:00–19:59:59) before (593 samples) and after closure (936 samples) and once for nighttime recordings (20:00:00–06:59:59) before (499 samples) and after border closure (795 samples). The model performance of the quasi-Poisson GLM regressions were indicated by the quasi-Akaike information criterion (QAIC) (Bolker, 2020). A lower QAIC indicates a better goodness of fit. Correlation between variables was tested using the `cor.test()` function in R. No variables were correlated and since no ferries run at night this variable was excluded from the nighttime models.

Data Visualisation

The `ggplot2` package in R was used to plot the seasonal variables against the shipping noise indicators and the higher frequency TOB that according to the Wenz curve should be heavily influenced by wind (100–10,000 Hz) (Wenz, 1962). A LOESS curve was fitted with a span of 0.05 to make the comparison of the trends more intuitive.

To assess daily and weekly noise level changes, the hourly median 63–125 Hz TOB were plotted using the `timeVariation` function from the `openair` package in R (Carslaw and Ropkins, 2012). Diurnal and weekly changes were assessed separately for the data collected before (29 January–14 March 2020) and during (15 March–26 May 2020) border closure. This function plots the 95% confidence intervals and the median, which were calculated through bootstrap simulation, providing the diurnal variation of the noise levels. These plots were used to identify any diurnal or weekly patterns in elevated noise levels in the before and after periods.

RESULTS

Route Density

In February and March 2020, passenger route density (RD) is the highest, while in April and May fishing RD is the highest compared to the other vessel types (**Figure 3** and **Table 2**). The route density of cargo vessels remain relatively similar from February to May 2020. From February to May 2020, the total marine vessel RD increased 15%, passenger RD decreased 47%, cargo RD increased 8%, fishing RD increased 46%, tanker RD decreased 2%, and all other types of vessel RD increased 76% within the 100 km² area around the Tisler reef (**Figure 3** and **Table 2**).

Statistical Analysis

When comparing the noise levels before vs. after the borders closed and ferry traffic ceased, the difference between hourly median TOB (25–15,849 Hz) ranged from 0.6 to 6.9 dB at

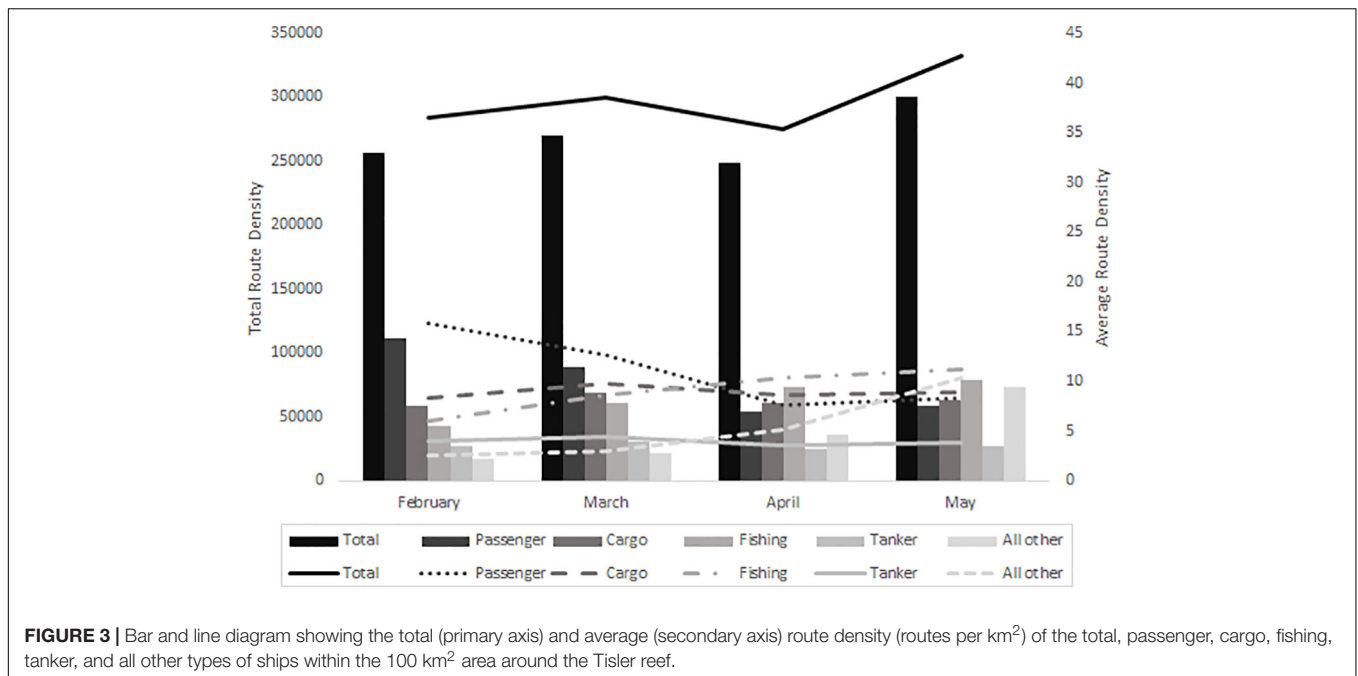


FIGURE 3 | Bar and line diagram showing the total (primary axis) and average (secondary axis) route density (routes per km²) of the total, passenger, cargo, fishing, tanker, and all other types of ships within the 100 km² area around the Tisler reef.

night and from 0.8 to 9.8 dB during the day. The shipping noise indicators (63–125 Hz), had a reduction of 8.9 ± 0.9 (MAD) dB during the day and 1.9 ± 0.1 (MAD) dB during the night (Table 3). Before lockdown, the median noise levels were 3.5 ± 2.19 (MAD) dB higher during the day vs. the night. After lockdown, the noise levels were 0.9 ± 0.52 (MAD) dB higher during the day vs. the night (Table 3).

During the day, the variable “ferry” and “wind speed” significantly affected the variability in shipping noise indicator levels before border closure, while “wind speed” and “sea level” affected the variability in the noise levels after border closure (Table 4). During the night, “wind speed” and “sea level” affected the variability in the noise levels, although this is not or less significant at the 63 and 79 Hz TOB after border closure (Table 4). However, wind speed had a strong effect on almost all TOB throughout this time series (Figure 4 and Table 4). Before border closure, sea level affected noise levels the least during the day and

the most during the night. After border closure, sea level mostly affected the TOB above and below the 251–3981 Hz TOB. The seasonal changes in the wind speed and sea level are given in Table 5.

Diurnal, Weekly, and Monthly Variation

Events with high sound pressure levels at 09:00, 16:00, and 17:00 are visible as high peaks in the diurnal “before border closure” plot (Figure 5A). Lower but still distinct peaks are observed at 07:00, 11:00, 13:00, 14:00, and 19:00. These peaks coincide with the ferry CPA timings. The strong shipping noise-driven diurnal pattern disappears after border closure and manifests itself as a flatter, quieter, curve in the diurnal plot (Figure 5B). The pattern observed during border closure appears more similar to what can be observed during nighttime before border closure.

Before border closure, weekly changes in the noise levels indicate higher sound pressure levels on Wednesdays and at the weekends (Figure 5C). A reverse pattern with a slight decrease in the sound levels on Wednesdays and Sundays is observed after border closure, together with a slight increase on Saturdays (Figure 5D).

TABLE 2 | Total and average route density (routes per km²) of the total, passenger, cargo, fishing, tanker, and all other types of vessels within the 100 km² area around the Tisler reef (Source: EMODnet Human Activities: EMSA Route Density Map).

Vessel type	February		March		April		May	
	Total	Av.	Total	Av.	Total	Av.	Total	Av.
Total	256,452	36.57	270,384	38.56	248,565	35.5	300,288	42.82
Passenger	110,959	15.82	89,166	12.72	53,736	7.66	58,855	8.39
Cargo	58,106	8.29	68,946	9.83	60,603	8.64	62,923	8.97
Fishing	42,398	6.05	60,431	8.61	72,694	10.4	78,666	11.21
Tanker	27,634	3.94	30,583	4.36	25,169	3.59	27,152	3.87
All other	17,355	2.47	21,258	3.03	36,363	5.18	72,692	10.36

DISCUSSION

This study shows that the noise levels at the Tisler reef significantly reduced after the international border closed between Norway and Sweden as a consequence of the COVID-19 pandemic. While a seasonal reduction in wind speed and sea level accounted for a decrease in the noise levels at the Tisler reef, the ceasing of ferry traffic greatly reduced the levels of noise pollution at the reef during the day.

TABLE 3 | Median noise levels (dB re 1 μ Pa) of the 1/3 octave bands.

	NIGHT (20:00:00–06:59:59)									DAY (07:00:00–19:59:59)									
	Before border closure				After border closure					≠	Before border closure				After border closure				
	25 th Perc.	Median	± MAD	75 th Perc.	25 th Perc.	Median	± MAD	75 th Perc.	25 th Perc.		Median	± MAD	75 th Perc.	25 th Perc.	Median	± MAD	75 th Perc.	≠	
25 Hz	72.3	82.9	16.9	100.4	70.9	75.9	8.6	90.9	-6.9	73.6	83.6	16.9	104.3	71.3	75.3	7.2	87.9	-8.3	
32 Hz	71.9	77.2	9.3	91.1	71.2	75.1	6.6	87.5	-2.1	74.6	83.7	14.8	97.0	71.5	74.8	5.7	84.9	-8.9	
40 Hz	72.2	75.5	6.8	86.4	71.7	73.5	3.3	80.9	-2.0	74.4	80.8	11.1	92.3	72.0	73.8	3.3	80.4	-7.1	
50 Hz	72.0	75.4	6.9	84.6	72.1	73.7	2.9	78.9	-1.7	74.9	81.9	11.4	91.1	72.5	74.3	3.4	79.7	-7.6	
63 Hz	71.1	75.2	7.2	82.7	71.7	73.4	3.2	78.3	-1.7	75.6	83.5	11.2	90.8	72.1	74.0	3.5	79.5	-9.5	
79 Hz	70.9	75.5	8.0	82.3	71.8	73.6	3.2	77.8	-1.9	76.8	84.5	10.7	91.2	72.4	74.7	4.2	79.6	-9.8	
100 Hz	70.3	76.2	8.3	80.9	71.6	74.1	4.5	78.4	-2.0	77.7	84.0	9.9	90.8	72.4	75.6	5.3	80.3	-8.4	
125 Hz	70.2	76.7	8.7	81.8	71.5	74.7	5.5	79.1	-2.0	78.2	84.1	9.0	90.1	72.8	76.7	6.0	80.9	-7.4	
158 Hz	70.6	77.5	8.6	82.4	71.6	75.6	6.6	80.6	-1.9	78.6	84.1	8.1	89.4	73.5	77.6	6.5	82.4	-6.4	
200 Hz	70.7	77.8	9.8	84.2	72.0	76.8	7.1	81.6	-1.0	79.2	85.0	8.4	90.5	74.6	78.9	6.6	83.4	-6.2	
251 Hz	71.1	78.8	10.9	85.9	72.9	78.2	7.4	82.9	-0.6	80.2	86.0	7.4	90.6	75.6	80.1	6.5	84.4	-5.9	
316 Hz	71.5	80.2	10.9	86.7	73.7	79.5	7.4	84.0	-0.7	81.2	86.6	6.9	90.7	76.5	80.9	6.3	85.0	-5.6	
398 Hz	72.9	81.7	10.4	87.8	74.9	80.6	7.1	84.6	-1.1	81.6	86.7	6.7	90.7	77.5	81.9	6.0	85.6	-4.8	
501 Hz	73.4	85.6	10.8	89.0	75.7	82.0	7.1	85.7	-3.7	82.4	87.5	6.7	91.6	78.4	82.8	5.8	86.3	-4.6	
631 Hz	73.7	83.0	10.4	89.0	75.6	81.9	7.2	85.7	-1.0	82.5	87.2	6.5	91.2	78.6	82.9	5.6	86.1	-4.3	
794 Hz	73.8	83.0	10.6	89.1	75.4	81.9	7.1	85.7	-1.2	81.7	87.0	6.8	91.1	78.5	82.6	5.7	86.2	-4.4	
1,000 Hz	74.3	83.2	10.4	89.2	75.3	81.7	7.3	85.8	-1.5	81.3	86.7	7.1	91.1	78.5	82.7	5.6	86.1	-4.0	
1,259 Hz	74.0	83.2	10.4	89.2	75.2	81.7	7.1	85.7	-1.5	80.9	86.2	7.3	90.7	78.2	85.4	5.8	86.0	-0.8	
1,585 Hz	73.6	82.9	10.5	88.9	74.3	81.1	7.6	85.4	-1.9	80.2	85.7	7.5	90.2	77.5	82.0	6.0	85.7	-3.7	
1,995 Hz	73.3	82.7	10.6	88.8	73.8	80.8	7.7	85.2	-2.0	79.3	85.4	7.8	90.1	77.0	81.5	6.1	85.4	-3.8	
2,512 Hz	73.3	82.2	10.4	88.1	73.1	79.8	7.9	84.4	-2.3	78.8	84.6	7.8	89.3	76.2	80.7	6.0	84.6	-3.9	
3,162 Hz	73.4	82.7	10.5	88.7	73.6	80.4	7.9	85.0	-2.3	79.2	85.1	7.9	89.8	76.8	81.3	6.0	85.1	-3.8	
3,981 Hz	73.0	82.1	10.4	87.9	73.0	80.0	7.9	84.4	-2.1	78.3	84.5	7.9	89.0	76.5	80.9	5.9	84.6	-3.6	
5,012 Hz	72.5	81.2	10.0	86.8	72.2	78.9	7.7	83.4	-2.3	77.2	83.5	7.7	87.9	75.8	79.9	5.6	83.5	-3.6	
6,310 Hz	72.5	80.9	9.7	86.2	72.0	78.6	7.5	83.0	-2.3	76.6	83.0	7.4	87.2	75.5	79.6	5.5	83.1	-3.4	
7,943 Hz	72.6	80.3	9.2	85.6	71.8	78.2	7.3	82.6	-2.1	76.0	82.3	7.3	86.5	75.0	79.1	5.5	82.6	-3.2	
10,000 Hz	72.6	79.7	8.9	84.8	71.9	77.7	7.1	82.0	-2.0	75.4	81.6	6.9	85.6	74.5	78.5	5.4	82.0	-3.1	
12,589 Hz	72.8	79.5	8.1	84.2	72.3	77.3	6.6	81.6	-2.2	75.3	81.0	6.2	84.6	74.2	78.1	5.4	81.5	-2.9	
15,849 Hz	73.1	79.2	6.6	83.0	72.5	76.8	6.1	80.8	-2.3	75.1	80.4	5.0	83.1	74.0	77.4	5.0	80.7	-3.0	

Comparing day and night before (29 January–14 March 2020) and after border closure (15 March –26 May 2020). The 25th and 75th percentile as well as the mean absolute deviation (MAD) are given. The difference (≠) indicates how much the noise levels (dB) have reduced after the border closure between Norway and Sweden because of the COVID-19 pandemic.

TABLE 4 | Table showing goodness of fit (QAIC) and the statistical significance (p -values) of the GLM regression analyses of day and nighttime noise levels before (29 January–14 March 2020) and after border closure (15 March–26 May 2020), accounting for the predictor variables ferry, wind speed (m/s), and sea level height (cm).

	NIGHT (20:00:00–06:59:59)						DAY (07:00:00–19:59:59)							
	Before border closure			After border closure			Before border closure				After border closure			
	QAIC	Wind speed	Sea level	QAIC	Wind speed	Sea level	QAIC	Ferry	Wind speed	Sea level	QAIC	Ferry	Wind speed	Sea level
25 Hz	2.58	0.202	0.878	1.92	0.065	< 0.05	2.76	0.276	0.268	0.056	1.83	0.992	< 0.05	< 0.001
32 Hz	1.72	0.473	0.693	1.51	< 0.05	< 0.05	1.72	< 0.001	0.106	< 0.05	1.41	0.95	< 0.05	< 0.05
40 Hz	1.17	0.209	0.409	0.82	< 0.01	< 0.01	1.18	< 0.001	< 0.01	< 0.05	0.76	0.96	< 0.001	< 0.001
50 Hz	0.89	< 0.01	0.168	0.6	0.053	< 0.05	0.89	< 0.001	< 0.001	< 0.05	0.57	0.938	< 0.001	< 0.001
63 Hz	0.74	< 0.001	0.056	0.55	0.06	< 0.01	0.78	< 0.001	< 0.001	0.097	0.53	0.64	< 0.001	< 0.001
79 Hz	0.54	< 0.001	< 0.05	0.45	0.219	0.09	0.71	< 0.001	< 0.001	0.162	0.46	0.792	< 0.001	< 0.001
100 Hz	0.35	< 0.001	< 0.001	0.41	< 0.001	< 0.05	0.63	< 0.001	< 0.001	0.261	0.44	0.755	< 0.001	< 0.001
125 Hz	0.28	< 0.001	< 0.001	0.4	< 0.001	< 0.05	0.56	< 0.001	< 0.001	0.432	0.46	0.833	< 0.001	< 0.001
158 Hz	0.24	< 0.001	< 0.001	0.42	< 0.001	< 0.05	0.49	< 0.001	< 0.001	0.586	0.45	0.737	< 0.001	< 0.001
200 Hz	0.23	< 0.001	< 0.001	0.4	< 0.001	< 0.05	0.47	< 0.001	< 0.001	0.486	0.42	0.538	< 0.001	< 0.001
251 Hz	0.23	< 0.001	< 0.001	0.41	< 0.001	0.112	0.42	< 0.001	< 0.001	0.697	0.39	0.691	< 0.001	< 0.01
316 Hz	0.23	< 0.001	< 0.001	0.39	< 0.001	0.376	0.37	< 0.001	< 0.001	0.665	0.34	0.74	< 0.001	< 0.01
398 Hz	0.25	< 0.001	< 0.01	0.38	< 0.001	0.351	0.35	< 0.001	< 0.001	0.731	0.32	0.712	< 0.001	< 0.05
501 Hz	0.24	< 0.001	< 0.01	0.38	< 0.001	0.602	0.33	< 0.001	< 0.001	0.73	0.29	0.884	< 0.001	0.084
631 Hz	0.23	< 0.001	< 0.01	0.37	< 0.001	0.884	0.31	< 0.001	< 0.001	0.708	0.27	0.922	< 0.001	0.195
794 Hz	0.24	< 0.001	< 0.01	0.36	< 0.001	0.783	0.29	< 0.001	< 0.001	0.835	0.28	0.742	< 0.001	0.668
1,000 Hz	0.22	< 0.001	< 0.01	0.35	< 0.001	0.496	0.27	< 0.001	< 0.001	0.788	0.26	0.692	< 0.001	0.861
1,259 Hz	0.22	< 0.001	< 0.01	0.36	< 0.001	0.508	0.24	< 0.001	< 0.001	0.829	0.25	0.693	< 0.001	0.861
1,585 Hz	0.22	< 0.001	< 0.01	0.34	< 0.001	0.118	0.24	< 0.001	< 0.001	0.829	0.25	0.678	< 0.001	0.283
1,995 Hz	0.2	< 0.001	< 0.01	0.33	< 0.001	0.066	0.22	< 0.001	< 0.001	0.764	0.23	0.718	< 0.001	0.237
2,512 Hz	0.17	< 0.001	< 0.01	0.3	< 0.001	< 0.05	0.2	< 0.001	< 0.001	0.636	0.22	0.77	< 0.001	0.221
3,162 Hz	0.19	< 0.001	< 0.01	0.3	< 0.001	< 0.05	0.2	< 0.001	< 0.001	0.693	0.22	0.76	< 0.001	0.15
3,981 Hz	0.16	< 0.001	< 0.01	0.27	< 0.001	< 0.01	0.19	< 0.001	< 0.001	0.735	0.2	0.811	< 0.001	0.086
5,012 Hz	0.14	< 0.001	< 0.01	0.23	< 0.001	< 0.01	0.18	< 0.001	< 0.001	0.814	0.18	0.823	< 0.001	< 0.05
6,310 Hz	0.12	< 0.001	< 0.01	0.21	< 0.001	< 0.001	0.16	< 0.001	< 0.001	0.926	0.16	0.821	< 0.001	< 0.05
7,943 Hz	0.1	< 0.001	< 0.01	0.18	< 0.001	< 0.001	0.15	< 0.001	< 0.001	0.696	0.15	0.814	< 0.001	< 0.01
10,000 Hz	0.09	< 0.001	< 0.01	0.15	< 0.001	< 0.001	0.14	< 0.001	< 0.001	0.47	0.13	0.844	< 0.001	< 0.001
12,589 Hz	0.09	< 0.001	< 0.05	0.12	< 0.001	< 0.01	0.13	< 0.001	< 0.001	0.265	0.11	0.908	< 0.001	< 0.001

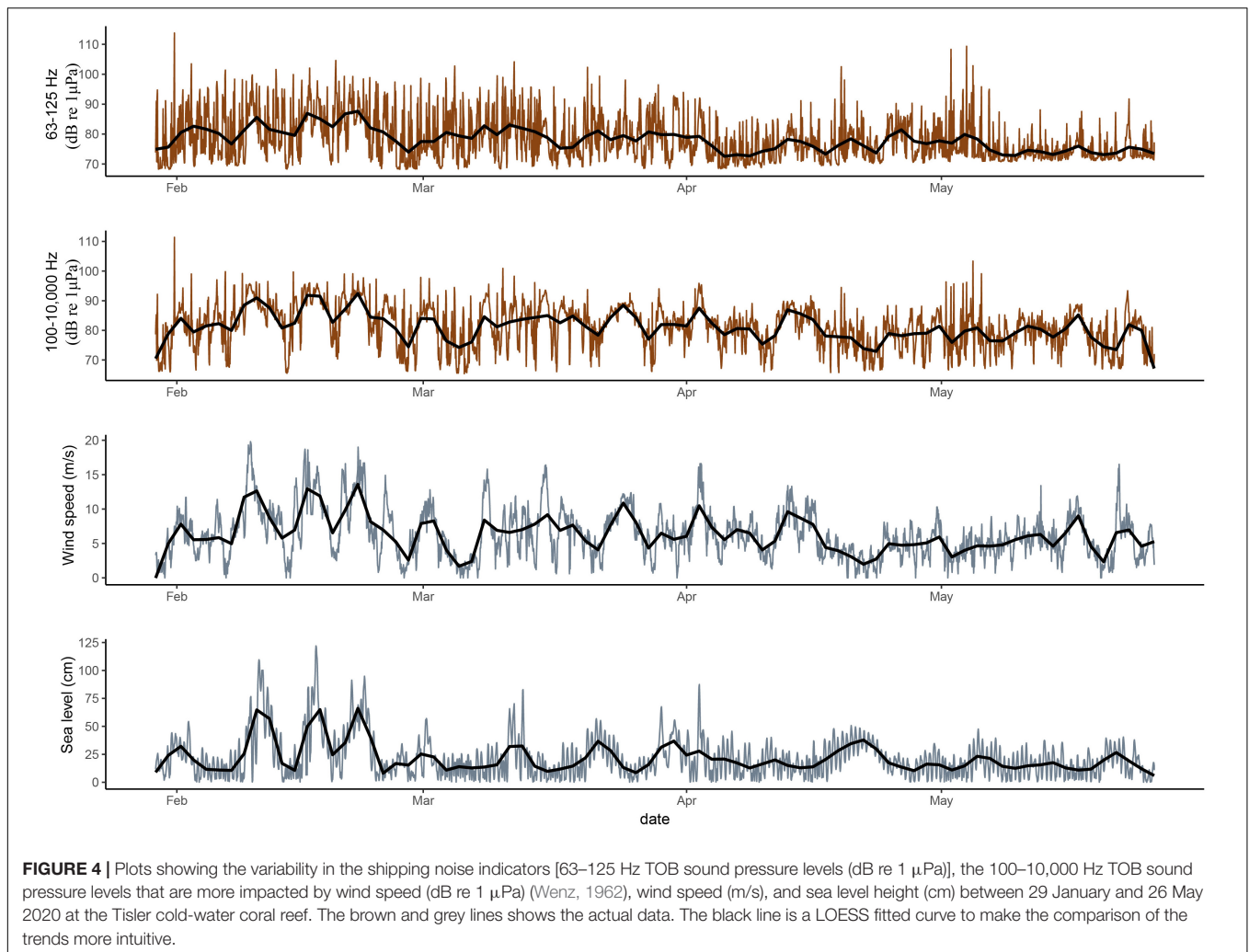


FIGURE 4 | Plots showing the variability in the shipping noise indicators [63–125 Hz TOB sound pressure levels (dB re 1 μ Pa)], the 100–10,000 Hz TOB sound pressure levels that are more impacted by wind speed (dB re 1 μ Pa) (Wenz, 1962), wind speed (m/s), and sea level height (cm) between 29 January and 26 May 2020 at the Tisler cold-water coral reef. The brown and grey lines shows the actual data. The black line is a LOESS fitted curve to make the comparison of the trends more intuitive.

TABLE 5 | The median and the mean absolute deviation (MAD) of the wind speed and sea level height at the Tisler reef downloaded from SMHI(smhi.se).

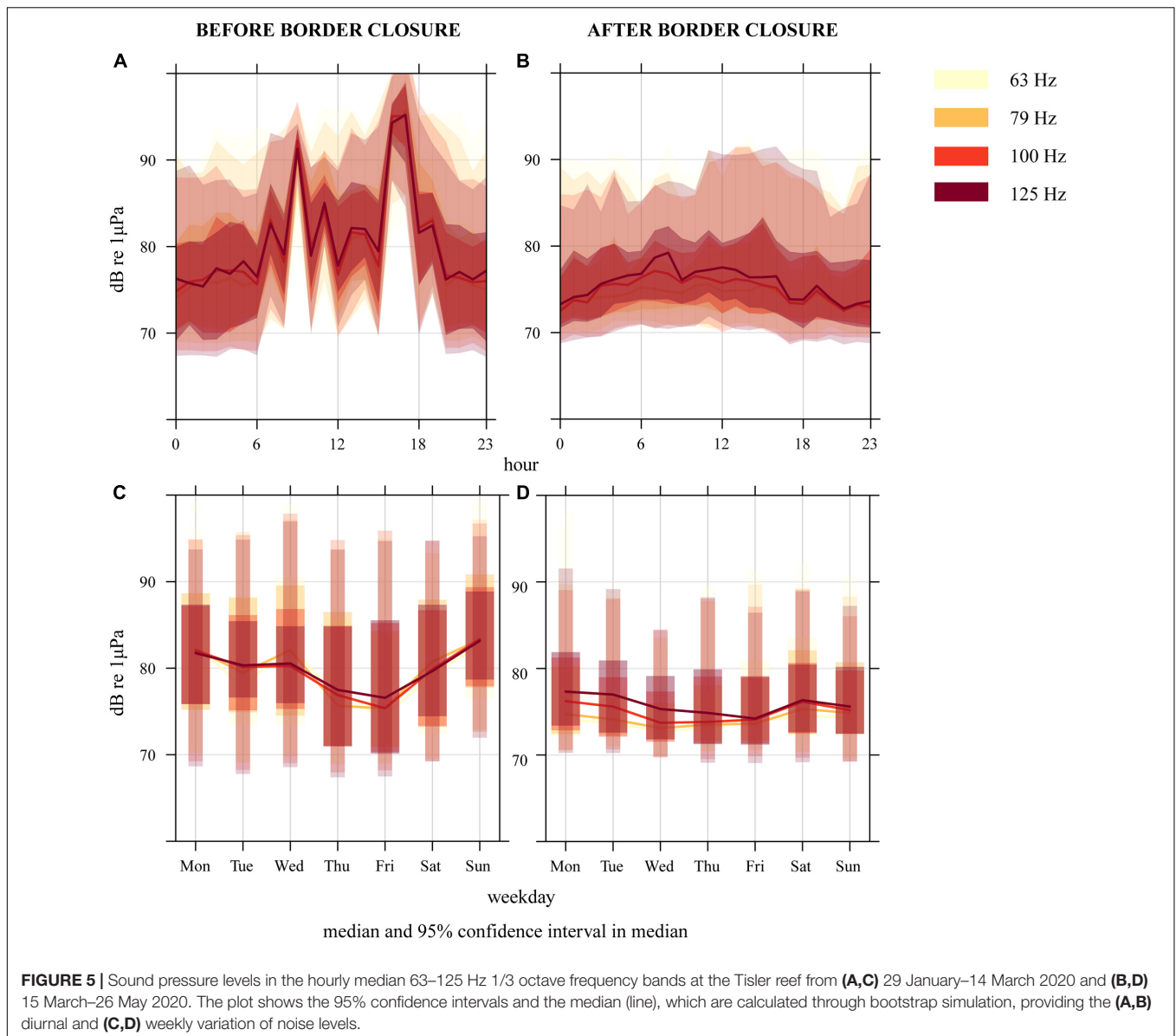
	NIGHT (20:00:00–06:59:59)					DAY (07:00:00–19:59:59)				
	Before border closure		After border closure		≠	Before border closure		After border closure		≠
	Median	± MAD	Median	± MAD		Median	± MAD	Median	± MAD	
Wind speed (m/s)	6.1	4.7	5.0	2.9	-1.1	6.2	4.5	5.3	2.5	-0.9
Sea level height (cm)	18.3	16.9	17.1	10.0	-1.25	19.2	18.6	16.8	10.6	-2.4

The ≠ symbol indicates the difference in the wind speed and sea level after border closure.

Compared to February 2020, the overall vessel route density increased by 15% in May 2020, but passenger vessel route density (i.e., ferry traffic) decreased 20% in March, 52% in April, and 47% in May. The COVID-19 border closure coincides with this reduction in passenger vessel route density. The overall increase in vessel route density from winter to spring can be explained by improved weather conditions making sea-going safer and more appealing for fishing and other vessel types, e.g., recreational vessels such as cruise ships (Robards et al., 2016). Between 1950 and 2007 researchers found that ambient noise levels in the world’s oceans increased as much as 3.3 dB per decade due to

an increase in vessel traffic (Andrew et al., 2002). The observed drop in noise levels at the Tisler reef could therefore translate to travelling back more than two decades in time. Ferries have been travelling between Sandefjord (Norway) and Strömstad (Sweden) since (at least) 1964². Even though the larger surrounding area’s overall vessel route density increased over the time period of this study, the drop in the noise levels at the Tisler reef indicates that the soundscape is heavily impacted by shipping noise, which directly over the reef is dominated by the ferries.

²<https://www.lardex.net/gruppe/519>



Since the ferries do not travel at night, the nighttime noise levels which varied between 73.4 and 85.6 dB re 1 μ Pa across all the TOB are likely to be more representative of the Tisler reefs' natural soundscape. The reduction of 1.9 ± 0.11 (MAD) dB in the noise levels during the night after border closure were driven by a seasonal change coupled with a reduction of both the wind speed and sea level height (Figure 4 and Table 5). A decrease in wind speed is typically found in temporal regions when transitioning from winter to spring (Wenz, 1962; Haver et al., 2019). Changes in sea level height can be attributed to short-term variations in waves and tides or flood events associated with winter snow melts or severe storms. At Tisler Reef, there is no strong tidal influence, instead, the water flow is channelled over a sill through the Ytre Hvaler sound, which has a NW–SE orientation (De Clippele et al., 2018). Acoustic Doppler Current Profile (ADCP) measurements from 2006 to 2010 indicated that 43% of the time, the currents

flow in a north-west direction and 57% in a south-east direction (De Clippele et al., 2018), which could attribute to the observed changes in the sea level height.

During the day, a much larger reduction of 8.9 ± 0.88 (MAD) dB in the 63–125 Hz TOB was observed after the border closed and ferry traffic ceased. If the nighttime reduction of 1.9 ± 0.11 (MAD) dB, which was driven by seasonal changes, is subtracted from the daytime reduction, we can deduce that the anthropogenic acoustic footprint at the Tisler reef was reduced by 7.0 ± 0.99 (MAD) dB as a consequence of the COVID-19 border closure.

Before border closure, the diurnal pattern was strongly driven by anthropogenic activity, i.e., the ferry traffic over the reef. Anthropogenic diurnal patterns have also, for example, been observed near the shore of North Carolina (Haviland-Howell et al., 2007) and in marine protected areas such as Glacier Bay

(Haver et al., 2019). The strong diurnal pattern disappeared during border closure and revealed more subtle changes in noise levels across the frequency bands. Weekly patterns were also observed, particularly during the weekend and on Wednesdays. These were likely linked to variation in the time schedule of vessel traffic further off-shore (**Figure 2**; Haviland-Howell et al., 2007). In addition, the difference in the noise levels between night and day, were much smaller after border closure (before: 3.5 ± 2.19 dB vs. after: 0.9 ± 0.52 dB). This indicates that the noise levels after border closure will reflect that of a much more natural and “unpolluted” soundscape. However, AIS, current speed, and biological data are needed to fully understand and quantify the changes observed in the Tisler reef’s soundscape.

Although not yet studied in detail, during “business as usual” the increased noise levels at the Tisler Reef caused by the ferry traffic could cause auditory masking (Simpson et al., 2011; Carroll et al., 2017; Stanley et al., 2017), affect individual and social behaviour (Myrberg and Fuiman, 2002), cause physical damage (Le Prell et al., 2012) and negatively affect the physiological functioning of the reef organisms (Nedelec et al., 2016; Simpson et al., 2016). While some studies indicate that fish might be able to habituate to continuous noise exposure (Nedelec et al., 2016; Holmes et al., 2017; Staaterman et al., 2020), this has not been shown for sporadic exposure (e.g., by ferry traffic), which can impact escape and swimming behaviour (Holmes et al., 2017). Regardless of the type of exposure, some reef fish and invertebrates are less mobile or sessile and are less likely to show clear behavioural changes when exposed to noise pollution (Ferrier-pages et al., 2021). While evidence of the effects of noise pollution on tropical coral reef organisms is growing (Ferrier-pages et al., 2021), none is currently available for cold-water coral reef organisms.

Since growing evidence shows that shipping noise can act as a chronic habitat-level stressor, which harms individual animals and ecosystem linkages (e.g. via disrupting predator-prey interactions) (Ferrier-pages et al., 2021), marine protected areas (MPAs), such as the Tisler reef MPA, should include measures for monitoring and mitigating anthropogenic noise (Haren, 2007; Williams et al., 2015). With or without an MPA to protect vulnerable marine ecosystems such as cold-water coral reefs, diverting shipping lanes or using time and area exclusions can help regulate anthropogenic noise threats (Weilgart, 2006). Studies, such as this one, that quantify the extent of the noise generated by individual components of the anthropogenic soundscape, such as shipping, can inform policymakers and stakeholders in developing legal frameworks and highlight the need for better management and technological solutions to mitigate noise pollution impacts on these sensitive marine environments.

CONCLUSION

A literature search for “cold-water coral” and “deep-sea coral” returned only 15 publications in the year 2000, while in 2020 it returned 253. While advances in technology have enabled us to increase our knowledge on these remote and

inaccessible reefs over the last two decades, simultaneously shipping, seismic surveys, oil and gas developments seismic airguns, and military sonar have increased the level of anthropogenic noise in the marine environment (Duarte et al., 2021). The COVID-19 shutdown has significantly reduced anthropogenic noise levels and provided us with the unique opportunity to study relatively unpolluted soundscapes (Derryberry et al., 2020). This study is the first to assess the extent of noise pollution at a cold-water coral reef and provides a baseline to guide us toward more effective management of these ecosystems. Results from “COVID-19 before and after noise pollution experiments” provide valuable insights to understand the extent to which noise pollution affects the functioning of marine ecosystems, especially nearshore, where passenger, fishing, and recreational shipping traffic is denser.

DATA AVAILABILITY STATEMENT

The datasets presented in this article are not readily available because the data is part of an ongoing project. Requests to access the datasets should be directed to corresponding author.

AUTHOR CONTRIBUTIONS

LDC: Conceptualization, fieldwork, writing, methodology. DR: Review and editing of the manuscript and methodology. Both authors contributed to the article and approved the submitted version.

FUNDING

The research leading to the results in this manuscript received funding from the European Union’s Horizon 2020 research and innovation programme ASSEMBLE Plus AmpLOPHELIA project (Grant Agreement No. 730984) conducted in 2020 at Tjärnö marine laboratory (University of Gothenburg, Sweden), the Horizon 2020 ATLAS (Grant Agreement No. 678760) and the Horizon 2020 iAtlantic project (Grant Agreement No. 818123). This manuscript reflects the authors’ view alone, and the European Union cannot be held responsible for any use that may be made of the information contained herein.

ACKNOWLEDGMENTS

We thank the crew onboard the RV Nereus and all personnel at Tjärnö who helped us during our stay, the deployment and recovery of the sound recorders. We thank Ann Larsson, Susanna Strömberg, and Tomas Lundälv for their support in the AmpLOPHELIA project. We also thank Ewan Edwards and Jack Gillespie for assisting with the logistics and transportation of the equipment. We would also like to thank the two reviewers whose comments allowed us to greatly improve this manuscript.

REFERENCES

- Addamo, A. M., Vertino, A., Stolarski, J., García-Jiménez, R., Taviani, M., and Machordom, A. (2016). Merging scleractinian genera: the overwhelming genetic similarity between solitary *Desmophyllum* and colonial *Lophelia*. *BMC Evol. Biol.* 16:108. doi: 10.1186/s12862-016-0654-8
- Andrew, R. K., Howe, B. M., and Mercer, J. A. (2011). Long-time trends in ship traffic noise for four sites off the North American West Coast. *J. Acoust. Soc. Am.* 129, 642–651. doi: 10.1121/1.3518770
- Andrew, R. K., Howe, B. M., Mercer, J. A., and Dzieciuch, M. A. (2002). Ocean ambient sound: comparing the 1960s with the 1990s for a receiver off the California coast. *Acoust. Res. Lett. Online* 3, 65–70. doi: 10.1121/1.1461915
- Baillon, S., Hamel, J. F., Wareham, V. E., and Mercier, A. (2012). Deep cold-water corals as nurseries for fish larvae. *Front. Ecol. Environ.* 10:351–356. doi: 10.1890/120022
- Bassett, C., Thomson, J., Dahl, P. H., and Polagye, B. (2014). Flow-noise and turbulence in two tidal channels. *J. Acoust. Soc. Am.* 135, 1764–1774. doi: 10.1121/1.4867360
- Bolker, B. (2020). Dealing with quasi-models in R. *Compare* 1, 5–452.
- Buhl-Mortensen, L. L., Vanreusel, A., Gooday, A. J., Levin, L. A., Priede, I. G., Buhl-Mortensen, P., et al. (2010). Biological structures as a source of habitat heterogeneity and biodiversity on the deep ocean margins. *Mar. Ecol. Evol. Perspect.* 31, 21–50. doi: 10.1111/j.1439-0485.2010.00359.x
- Carroll, A. G., Przeslawski, R., Duncan, A., Gunning, M., and Bruce, B. (2017). A critical review of the potential impacts of marine seismic surveys on fish & invertebrates. *Mar. Pollut. Bull.* 114, 9–24. doi: 10.1016/j.marpolbul.2016.11.038
- Carslaw, D. C., and Ropkins, K. (2012). Openair - an R package for air quality data analysis. *Environ. Model. Softw.* 2, 52–61. doi: 10.1016/j.envsoft.2011.09.008
- Cathalot, C., Van Oevelen, D., Cox, T. J. S., Kutti, T., Lavaleye, M., Duineveld, G., et al. (2015). Cold-water coral reefs and adjacent sponge grounds: hotspots of benthic respiration and organic carbon cycling in the deep sea. *Front. Mar. Sci.* 2:1–12. doi: 10.3389/fmars.2015.00037
- Clark, M. R., Tittensor, D., Rogers, A. D., Brewin, P., Schlacher, T., Rowden, A., et al. (2006). *Seamounts, Deep-Sea Corals and Fisheries: Vulnerability of Deep-Sea Corals to Fishing on Seamounts Beyond Areas of National Jurisdiction*. Cambridge: UNEP-WCMC.
- Davies, A. J., Wisshak, M., Orr, J. C., and Murray Roberts, J. (2008). Predicting suitable habitat for the cold-water coral *Lophelia pertusa* (Scleractinia). *Deep. Res. Part I Oceanogr. Res. Pap.* 55, 1048–1062. doi: 10.1016/j.dsr.2008.04.010
- De Clippele, L. H., Huvenne, V. A. I., Molodtsova, T. N., and Roberts, J. M. (2019). The diversity and ecological role of non-scleractinian corals (Antipatharia and Alcyonacea) on scleractinian cold-water coral mounds. *Front. Mar. Sci.* 6:184. doi: 10.3389/fmars.2019.00184
- De Clippele, L. H., Huvenne, V. A. I., Orejas, C., Lundäl, T., Fox, A., Hennige, S. J., et al. (2018). The effect of local hydrodynamics on the spatial extent and morphology of cold-water coral habitats at Tisler Reef, Norway. *Coral Reefs* 37, 253–266. doi: 10.1007/s00338-017-1653-y
- De Clippele, L. H., Rovelli, L., Ramiro-Sánchez, B., Kazanidis, G., Vad, J., Turner, S., et al. (2021). Mapping cold-water coral biomass: an approach to derive ecosystem functions. *Coral Reefs* 40, 215–231. doi: 10.1007/s00338-020-02030-5
- de Froe, E., Rovelli, L., Glud, R. N., Maier, S. R., Duineveld, G., Mienis, F., et al. (2019). Benthic oxygen and nitrogen exchange on a cold-water coral reef in the North-East Atlantic Ocean. *Front. Mar. Sci.* 6:665. doi: 10.3389/fmars.2019.00665
- Dekeling, R., Tasker, M., Ainslie, M., Andersson, M., André, M., Borsani, F., et al. (2016). “The European marine strategy: noise monitoring in European marine waters from 2014,” in *The Effects of Noise on Aquatic Life II*, eds A. N. Popper, and A. Hawkins (New York, NY: Springer), 205–215.
- Derryberry, E. P., Phillips, J. N., Derryberry, G. E., Blum, M. J., and Luther, D. (2020). Singing in a silent spring: birds respond to a half-century soundscape reversion during the COVID-19 shutdown. *Science* 370, 575–579. doi: 10.1126/SCIENCE.ABD5777
- Dobson, A. J., and Barnett, A. G. (2008). *Introduction to Generalized Linear Models*, 3rd Edn. Boca Raton, FL: Chapman and Hall.
- Douarin, M., Sinclair, D. J., Elliot, M., Henry, L. A., Long, D., Mitchison, F., et al. (2014). Changes in fossil assemblage in sediment cores from Mingulay Reef Complex (NE Atlantic): implications for coral reef build-up. *Deep. Res. II Top. Stud. Oceanogr.* 99, 286–296. doi: 10.1016/j.dsr2.2013.07.022
- Duarte, C. M., Chapuis, L., Collin, S. P., Costa, D. P., Devassy, R. P., Eguiluz, V. M., et al. (2021). The soundscape of the Anthropocene ocean. *Science* 371:eaba4658. doi: 10.1126/science.aba4658
- Ferrier-pages, C., Leal, M. C., Calado, R., Schmid, D. W., Lecchini, D., and Allemand, D. (2021). Noise pollution on coral reefs? — A yet underestimated threat to coral reef communities. *Mar. Pollut. Bull.* 165:112129. doi: 10.1016/j.marpolbul.2021.112129
- Fosså, J. H., Skjoldal, H. R., Grafton, R. Q., Hilborn, R., Squires, D., and Tait, M. (2010). *Handbook of Marine Fisheries Conservation and Management*. Oxford: Oxford University Press.
- Frisk, G. V. (2012). Noiseconomics: the relationship between ambient noise levels in the sea and global economic trends. *Sci. Rep.* 2:437. doi: 10.1038/srep00437
- Garrett, J. K., Blondel, P., Godley, B. J., Pikesley, S. K., Witt, M. J., and Johanning, L. (2016). Long-term underwater sound measurements in the shipping noise indicator bands 63 Hz and 125 Hz from the port of Falmouth Bay, UK. *Mar. Pollut. Bull.* 110, 438–448. doi: 10.1016/j.marpolbul.2016.06.021
- Guihen, D., White, M., and Lundäl, T. (2013). Boundary layer flow dynamics at a cold-water coral reef. *J. Sea Res.* 78, 36–44. doi: 10.1016/j.seares.2012.12.007
- Haren, A. M. (2007). Reducing noise pollution from commercial shipping in the channel islands national marine sanctuary: a case study in marine protected area management of underwater noise. *J. Int. Wildl. Law Policy* 10, 153–173. doi: 10.1080/13880290701347432
- Haver, S. M., Fournet, M. E., Dziak, R. P., Gabriele, C., Gedamke, J., Hatch, L. T., et al. (2019). Comparing the underwater soundscapes of four U.S. National Parks and marine sanctuaries. *Front. Mar. Sci.* 6:500. doi: 10.3389/fmars.2019.00500
- Haviland-Howell, G., Frankel, A. S., Powell, C. M., Bocconcelli, A., Herman, R. L., and Sayigh, L. S. (2007). Recreational boating traffic: a chronic source of anthropogenic noise in the Wilmington, North Carolina Intra-coastal Waterway. *J. Acoust. Soc. Am.* 122, 151–160. doi: 10.1121/1.2717766
- Hennige, S. J., Morrison, C. L., Form, U., Büscher, J., Kamenos, N., and Roberts, J. M. (2014). Self-recognition in corals facilitates deep-sea habitat engineering. *Sci. Rep.* 4:6782. doi: 10.1038/srep06782
- Hennige, S. J., Wicks, L. C., Kamenos, N. A., Perna, G., Findlay, H. S., and Roberts, J. M. (2015). Hidden impacts of ocean acidification to live and dead coral framework. *Proc. Biol. Sci.* 282:20150990. doi: 10.1098/rspb.2015.0990
- Henry, L. A., Davies, A. J., and Roberts, J. M. (2010). Beta diversity of cold-water coral reef communities off western Scotland. *Coral Reefs* 29, 427–436. doi: 10.1007/s00338-009-0577-6
- Henry, L. A., Navas, J. M., Hennige, S. J., Wicks, L. C., Vad, J., and Roberts, J. M. (2013). Cold-water coral reef habitats benefit recreationally valuable sharks. *Biol. Conserv.* 161, 67–70. doi: 10.1016/j.biocon.2013.03.002
- Henry, L. A., Stehmann, M. F. W., De Clippele, L., Findlay, H. S., Golding, N., and Roberts, J. M. (2016). Seamount egg-laying grounds of the deep-water skate *Bathyraja richardsoni*. *J. Fish Biol.* 89, 1473–1481. doi: 10.1111/jfb.13041
- Hildebrand, J. A. (2009). Anthropogenic and natural sources of ambient noise in the ocean. *Mar. Ecol. Prog. Ser.* 395, 5–20. doi: 10.3354/meps08353
- Holmes, L. J., McWilliam, J., Ferrari, M. C. O., and McCormick, M. I. (2017). Juvenile damselfish are affected but desensitize to small motor boat noise. *J. Exp. Mar. Biol. Ecol.* 494, 63–68. doi: 10.1016/j.jembe.2017.05.009
- Johnson, M., Partan, J., and Hurst, T. (2013). Low complexity lossless compression of underwater sound recordings. *J. Acoust. Soc. Am.* 133, 1387–1398. doi: 10.1121/1.4776206
- Kazanidis, G., Henry, L. A., Roberts, J. M., and Witte, U. F. M. (2016). Biodiversity of *Spongosorites coralliohaga* (Stephens, 1915) on coral rubble at two contrasting cold-water coral reef settings. *Coral Reefs* 35, 193–208. doi: 10.1007/s00338-015-1355-2
- K. Lisa Yang Center for Conservation Bioacoustics (2019). *Raven Pro: Interactive Sound Analysis Software (Version 1.6.1) [Computer Software]*. Ithaca, NY: The Cornell Lab of Ornithology. Available online at: <http://ravensoundsoftware.com/>
- Lavaleye, M., Duineveld, G., Lundäl, T., White, M., Guihen, D., Kiriakoulakis, K., et al. (2009). Cold-water corals on the Tisler reef preliminary observations on the dynamic reef environment. *Oceanography* 22, 76–84.
- Le Prell, C. G., Henderson, D., and Fay, R. R. (2012). *Noise-Induced Hearing Loss*. Berlin: Springer.

- Maier, S. R., Kutti, T., Bannister, R. J., Fang, J. K. H., van Breugel, P., van Rijswijk, P., et al. (2020). Recycling pathways in cold-water coral reefs: use of dissolved organic matter and bacteria by key suspension feeding taxa. *Sci. Rep.* 10:9942. doi: 10.1038/s41598-020-66463-2
- McCullagh, P., and Nelder, J. (1989). *Generalised Linear Models*, 2nd Edn. Boca Raton, FL: Chapman and Hall.
- McKenna, M. F., Ross, D., Wiggins, S. M., and Hildebrand, J. A. (2012). Underwater radiated noise from modern commercial ships. *J. Acoust. Soc. Am.* 131, 92–103. doi: 10.1121/1.3664100
- Merchant, N. D., Brookes, K. L., Faulkner, R. C., Bicknell, A. W. J., Godley, B. J., and Witt, M. J. (2016). Underwater noise levels in UK waters. *Sci. Rep.* 6:36942. doi: 10.1038/srep36942
- Mienis, F., van der Land, C., de Stigter, H. C., van de Vorstenbosch, M., de Haas, H., Richter, T., et al. (2009). Sediment accumulation on a cold-water carbonate mound at the Southwest Rockall Trough margin. *Mar. Geol.* 265, 40–50. doi: 10.1016/j.margeo.2009.06.014
- Mueller, C. E., Larsson, A. I., Veuger, B., Middelburg, J. J. and Van Oevelen, D., (2014). Opportunistic feeding on various organic food sources by the cold-water coral *Lophelia pertusa*. *Biogeosciences* 11, 123–133. doi: 10.5194/bg-11-123-2014
- Morato, T., González-Irusta, J. M., Dominguez-Carrió, C., Wei, C. L., Davies, A., Sweetman, A. K., et al. (2020). Climate-induced changes in the suitable habitat of cold-water corals and commercially important deep-sea fishes in the North Atlantic. *Glob. Chang. Biol.* 26, 2181–2202. doi: 10.1111/gcb.14996
- Myrberg, A. A., and Fuiman, L. A. (2002). *The Sensory World of Coral Reef Fishes*. Amsterdam: Elsevier.
- Nedelec, S. L., Mills, S. C., Lecchini, D., Nedelec, B., Simpson, S. D., and Radford, A. N. (2016). Repeated exposure to noise increases tolerance in a coral reef fish. *Environ. Pollut.* 216, 428–436. doi: 10.1016/j.envpol.2016.05.058
- Peng, C., Zhao, X., and Liu, G. (2015). Noise in the sea and its impacts on marine organisms. *Int. J. Environ. Res. Public Health* 12, 12304–12323. doi: 10.3390/ijerph121012304
- Piercy, J. J. B., Codling, E. A., Hill, A. J., Smith, D. J., and Simpson, S. D. (2014). Habitat quality affects sound production and likely distance of detection on coral reefs. *Mar. Ecol. Prog. Ser.* 516, 35–47.
- R Development Core Team, (2010). *R: A Language and Environment for Statistical Computing*. Vienna: R Foundation for Statistical Computing.
- Robards, M. D., Silber, G. K., Adams, J. D., Arroyo, J., Lorenzini, D., Schwehr, K., et al. (2016). Conservation science and policy applications of the marine vessel Automatic Identification System (AIS)-A review. *Bull. Mar. Sci.* 92, 75–103. doi: 10.5343/bms.2015.1034
- Roberts, J. M., Wheeler, A. J., and Freiwald, A. (2006). Reefs of the deep: the biology and geology of cold-water coral ecosystems. *Science* 312, 543–547. doi: 10.1126/science.1119861
- Roberts, J. M., Wheeler, A. J., Freiwald, A., and Cairns, S. D. (2009). *Cold-Water Corals: The Biology and Geology of Deep-Sea coral Habitats*. Cambridge: Cambridge University Press.
- Rovelli, L., Attard, K. M., Bryant, L. D., Flögel, S., Stahl, H., Roberts, J. M., et al. (2015). Benthic O₂ uptake of two cold-water coral communities estimated with the non-invasive eddy correlation technique. *Mar. Ecol. Prog. Ser.* 525, 97–104. doi: 10.3354/meps11211
- Simmonds, M. P., Dolman, S. J., Jasny, M., Parsons, E. C. M., Weilgart, L., Wright, A. J., et al. (2014). Marine noise pollution - increasing recognition but need for more practical action. *J. Ocean Technol.* 9, 71–90.
- Simpson, S. D., Radford, A. N., Holles, S., Ferarri, M. C., Chivers, D. P., McCormick, M. I., et al. (2016). “Small-boat noise impacts natural settlement behavior of coral reef fish larvae,” in *The Effects of Noise on Aquatic Life II*, eds A. Popper, and A. Hawkins (Berlin: Springer), 1041–1048.
- Simpson, S. D., Radford, A. N., Tickle, E. J., Meekan, M. G., and Jeffs, A. G. (2011). Adaptive avoidance of reef noise. *PLoS One* 6:e16625. doi: 10.1371/journal.pone.0016625
- Staaterman, E., Gallagher, A. J., Holder, P. E., Reid, C. H., Altieri, A. H., Ogburn, M. B., et al. (2020). Exposure to boat noise in the field yields minimal stress response in wild reef fish. *Aquat. Biol.* 29, 93–103. doi: 10.3354/ab010728
- Stanley, J. A., Van Parijs, S. M., and Hatch, L. T. (2017). Underwater sound from vessel traffic reduces the effective communication range in Atlantic cod and haddock. *Sci. Rep.* 7:14633. doi: 10.1038/s41598-017-14743-9
- Strasberg, M. (1979). Nonacoustic noise interference in measurements of infrasonic ambient noise. *J. Acoust. Soc. Am.* 66:1487.
- Sundahl, H., Buhl-Mortensen, P., and Buhl-Mortensen, L. (2020). Distribution and suitable habitat of the cold-water corals *Lophelia pertusa*, *Paragorgia arborea*, and *Primnoa resedaeformis* on the Norwegian continental shelf. *Front. Mar. Sci.* 7:213. doi: 10.3389/fmars.2020.00213
- Sweetman, A. K., Thurber, A. R., Smith, C. R., Levin, L. A., Mora, C., Wei, C.-L., et al. (2017). Major impacts of climate change on deep-sea benthic ecosystems. *Elem. Sci. Anth.* 5:4. doi: 10.1525/elementa.203
- Tasker, M. L., Amundin, M., Andre, M., Hawkins, A., Lang, W., Merck, T., et al. (2010). *MSFD Task Group 11 Report: Underwater Noise and Other Forms of Energy*. European Commission Joint Research Centre/ICES Report EUR 24341. Luxembourg: Joint Research Centre.
- Thomson, D. J. M., and Barclay, D. R. (2020). Real-time observations of the impact of COVID-19 on underwater noise. *J. Acoust. Soc. Am.* 147, 3390–3396. doi: 10.1121/10.0001271
- Van der Land, C., Eisele, M., Mienis, F., de Haas, H., Hebbeln, D., Reijmer, J. J. G., et al. (2014). Carbonate mound development in contrasting settings on the Irish margin. *Deep. Res. II Top. Stud. Oceanogr.* 99, 297–306. doi: 10.1016/j.dsr2.2013.10.004
- van Oevelen, D., Duineveld, G., Lavaley, M., Mienis, F., Soetaert, K., and Heip, C. H. R. (2009). The cold-water coral community as hotspot of carbon cycling on continental margins: a food-web analysis from Rockall Bank (northeast Atlantic). *Limnol. Oceanogr.* 54, 1829–1844. doi: 10.4319/lo.2009.54.6.1829
- Wagner, H., Purser, A., Thomsen, L., Jesus, C. C., and Lundäl, T. (2011). Particulate organic matter fluxes and hydrodynamics at the Tisler cold-water coral reef. *J. Mar. Syst.* 85, 19–29. doi: 10.1016/j.jmarsys.2010.11.003
- Weilgart, L. S. (2006). “Managing noise through marine protected areas around global hot spots,” in *Paper Presented at the 58th Annual Meeting of the International Whaling Commission Scientific Committee 12* (New York, NY: IWC).
- Wenz, G. M. (1962). Acoustic ambient noise in the ocean: spectra and sources. *J. Acoust. Soc. Am.* 34, 1936–1956. doi: 10.1121/1.1909155
- Wheeler, A. J., Bett, B. J., Billett, D. S. M., Masson, D., and Mayor, D. (2005). The impact of demersal trawling on northeast Atlantic deepwater coral habitats: the case of the Darwin Mounds, United Kingdom. *Am. Fish. Soc. Symp.* 41, 807–817.
- Wheeler, A. J., Beyer, A., Freiwald, A., de Haas, H., Huvenne, V. A. I., Kozachenko, M., et al. (2007). Morphology and environment of cold-water coral carbonate mounds on the NW European margin. *Int. J. Earth Sci.* 96, 37–56. doi: 10.1007/s00531-006-0130-6
- Wickham, H. (2011). Ggplot2. *Wiley Interdiscip. Rev. Comput. Stat.* 3, 180–185. doi: 10.1002/wics.147
- Williams, R., Erbe, C., Ashe, E., and Clark, C. W. (2015). Quiet(er) marine protected areas. *Mar. Pollut. Bull.* 100, 154–161. doi: 10.1016/j.marpolbul.2015.09.012
- Wisshak, M., Freiwald, A., Lundäl, T., and Gektidis, M. (2005). “The physical niche of the bathyal *Lophelia pertusa* in a non-bathyal setting: Environmental controls and palaeoecological implications,” in *Cold-Water Corals and Ecosystems*, eds A. Freiwald, and J. M. Roberts (Berlin: Springer), 979–1001.

Conflict of Interest: The authors declare that the research was conducted in the absence of any commercial or financial relationships that could be construed as a potential conflict of interest.

Copyright © 2021 De Clippele and Risch. This is an open-access article distributed under the terms of the Creative Commons Attribution License (CC BY). The use, distribution or reproduction in other forums is permitted, provided the original author(s) and the copyright owner(s) are credited and that the original publication in this journal is cited, in accordance with accepted academic practice. No use, distribution or reproduction is permitted which does not comply with these terms.

Nasjonalparkstyret for Raet
Postboks 504
4804 ARENDAL

Trondheim, 29.06.2021

Deres ref.:
2021/471

Vår ref. (bes oppgitt ved svar):
2021/3601

Saksbehandler:
Hege Langeland

Svar på spørsmål om retningslinjer for private gaver og bidrag til forvaltningen av verneområder

Vi viser til brev fra Raet nasjonalparkstyre 14.03.2021 med spørsmål om Miljødirektoratet kan utarbeide retningslinjer for private gaver og bidrag til nasjonalparkstyrene. Raet nasjonalparkstyres spørsmål gjelder i hvilken grad nasjonalparkstyret kan motta gaver og bidrag til forvaltningen av verneområdet.

Avgrensning mot adgangen til å motta personlige gaver

Slik vi oppfatter spørsmålet, så gjelder det ikke hvilken adgang forvaltere eller medlemmer i nasjonalparkstyret har til å motta personlige gaver. For ordens skyld nevnes det imidlertid at det er svært snevert adgang til å motta slike personlige gaver, og verste fall kan mottak av personlige gaver og ytelser være straffbart. Problemstillingen er også regulert i statsansatteloven § 39, hvor det står at ingen statsansatte kan motta gaver dersom den er egnet til, eller av gaver er ment, å påvirke vedkommendes tjenstlige handlinger. Lov om statsansatte gjelder for forvaltere, men ikke for medlemmer i nasjonalpark- eller verneområdestyrer eller for gaver som gis til styrene som forvaltningsorgan. De normene som angis gir allikevel god veiledning også for disse.

Hovedregel om gaver til et forvaltningsorgan

Det er ikke noe generelt forbud mot at forvaltningsorganer mottar gaver.

Når gaven er rettet til forvaltningsorganet som et bidrag til forvaltningen av området, vil det normalt være større åpning for å motta gaven enn når den er rettet til forvalter eller styremedlemmene personlig. Nasjonalpark- og verneområdestyrer kan som hovedregel ta imot gaver som et bidrag til forvaltningen av verneområdene. Hensynene bak forbudet mot gaver til statsansatte vil imidlertid i endel tilfeller også gjøre seg gjeldende for gaver til styret. Det bør derfor vurderes konkret i det enkelte tilfellet om styret bør ta imot gaven.

Regjeringen har utgitt en veileder om gaver i tjenesten som ligger her:

<https://www.regjeringen.no/no/dokumenter/Veileder-om-gaver-i-tjenesten/id757296/>

Retningslinjene gjelder direkte for statsansatte, men kan også gi veiledning i andre tilfeller.

KS har også utarbeidet lignende veiledning. <https://www.ks.no/fagomrader/demokrati-og-styring/etikk/apenhet-om-gaver-roller-og-eierinteresser/>

Omstendighetene rundt gaven må vurderes

Det er et alminnelig utgangspunkt at det ikke er tillatt å legge vekt på gaver i utøvelsen av offentlig myndighet - gavegiver kan ikke gis fordeler som følge av gaven. Styrene kan derfor ikke ta imot gaver som det er knyttet en forventning til eller et krav om en positiv motytelse for, for eksempel en tillatelse eller annen forhåndsbinding av myndighetsutøvelse.

Donasjoner fra f.eks. veldedige stiftelser vil ofte kunne mottas, da slike bidrag som regel ikke innebærer bindinger til noen med særinteresser i verneområdet. Gaver fra virksomheter som praktiserer donasjoner til ulike formål vil også kunne mottas. Dette med mindre det foreligger omstendigheter som er egnet til å svekke tilliten til styrets upartiskhet, f.eks. fordi virksomheten har sterke interesser i hvordan styret utøver sin myndighet.

Det forhold at en giver har nytte av gaven utelukker ikke at styret kan motta gaven. En gave kan innebærer at et forvaltningstiltak kommer raskere i gang enn dersom gaven ikke hadde vært gitt. Eksempler på dette er bidrag fra en turistbedrift til tilretteleggingstiltak som turistbedriften selv kan ha nytte av eller skjøtselsbidrag fra en grunneier. Forutsatt at slike tiltak allerede er prioritert eller vurderes av styrene som tiltak som skal eller bør gjennomføres av hensyn til verneformålet, anses slike gaver i utgangspunktet å være innenfor det forvaltningsorganet lovlig kan motta.

Styrene samarbeider ofte med både kommuner og private aktører om tilretteleggingstiltak og skjøtsel. Dette kan bidra til å skape et positivt engasjement og kan være viktig for å forankre vernet i lokalsamfunnene. Selv om det kan ligge et gaveelement i slike samarbeidsprosjekter, anser vi at dette er gaver som kan mottas, forutsatt at det ikke er forventning om en annen motytelse eller at det er andre omstendigheter rundt bidraget som svekker tilliten til styrenes upartiskhet. Et eksempel på et slikt samarbeid kan være fjerning av fremmede arter i verneområder.

En gave kan i enkelte tilfeller reise tvil om forvaltningsorganets integritet og uavhengighet, og det bør derfor alltid vurderes hvordan en gave vil fremstå for utenomverden (selv om giver ikke har en uttalt forventning eller krav om gjenytelse). Det bør som hovedregel ikke tas imot gaver eller fordeler fra en giver som styrene for tiden behandler søknader eller lignende fra. Det bør også utvises forsiktighet med å motta gaver fra virksomheter som vil kunne bli part i fremtidige saker/søknader til styret. Det bør ikke mottas gaver som gir bindinger eller som kan påvirke styret eller skape et inntrykk av dette.

En gave kan etter forholdene videre innebære at styrets medlemmer blir inhabile til å behandle en sak fordi gaven ut fra forholdene er egnet til å svekke tilliten til medlemmenes upartiskhet, jf. forvaltningsloven § 6 annet ledd.

Styrene må gjøre egne vurderinger av gaver og bidrag som tilbys på bakgrunn av de hensynene som her er gjennomgått. Vi viser også til ovennevnte veileder om gaver i tjenesten. I hvilken grad styrene bør motta eller avvise gaver fra private må vurderes konkret ut fra forholdene i den enkelte situasjon. Miljødirektoratet ønsker derfor ikke å lage felles retningslinjer for dette utover denne veiledningen.

Kontrakt

I samarbeidsprosjekter kan det som regel være hensiktsmessig å avtalefeste partenes forpliktelser eller krav til hvordan et tiltak skal utføres. Vi vurderer det ikke som aktuelt å inngå kontrakter om gaver. Vi forutsetter at styrene er tydelige ovenfor givere om at gaver som mottas ikke fører til bindinger/fordeler i utøvelsen av offentlig myndighet.

Åpenhet om gaver

Praktisering av åpenhet om hvilke gaver styrene mottar og hvem giveren er, vil være en fordel i denne sammenheng og være tillitsskapende. Som følge av dette ønsker Miljødirektoratet at det skal være åpenhet rundt gaver til styrene. Dersom styrene mottar gaver, ber vi om at denne informasjonen ligger tilgjengelig på styrenes nettsider.

Private bidragsyteres navn må ikke benyttes i forbindelse med bruken av merkevaren Norges nasjonalparker.

Hilsen
Miljødirektoratet

Dette dokumentet er elektronisk godkjent

Trond Flydal
seksjonsleder

Knut Fossum
seksjonsleder

Tenk miljø - velg digital postkasse fra e-Boks eller Digipost på www.norge.no.

Kopi til:

Dovrefjell nasjonalparkstyre	Postboks 987	2626	LILLEHAMMER
Nasjonalparkstyret for Forollhogna	Postboks 2600	7734	STEINKJER
Nasjonalparkstyret for Jotunheimen og Utladalen	Postboks 987	2626	LILLEHAMMER
Lomsdal-Visten nasjonalparkstyre	c/o Statsforvalteren i Nordland, Moloveien 10	8002	BODØ
Nasjonalparkstyret for Reinheimen	Postboks 987	2626	LILLEHAMMER
Nasjonalparkstyret for Reisa og Ráisduottarháldi	Postboks 6105	9291	TROMSØ
Nasjonalparkstyret for Skarvan og Roltdalen og Sylan	Postboks 2600	7734	STEINKJER
Øvre Pasvik nasjonalparkstyre	c/o Statsforvalter Troms og Finnmark, Statens hus	9815	VADSØ
Langsua nasjonalparkstyre	Postboks 987	2626	LILLEHAMMER

Jostedalsbreen nasjonalparkstyre	Njøsavegen 2	6863	LEIKANGER
Byrkjje nasjonalpaarhkeståvroe / Børgefjell nasjonalparkstyre	Postboks 2600	7734	STEINKJER
Varangerhalvøya nasjonalparkstyre	Statsforvalteren i Troms og Finnmark, Statens hus	9815	VADSØ
Blåfjella-Skjækerfjella-Lierne nasjonalparkstyre	Statsforvalteren i Trøndelag, Postboks 2600	7734	STEINKJER
Midtre Nordland nasjonalparkstyre	c/o Statsforvalteren i Nordland, Postboks 1405	8002	BODØ
Rondane-Dovre nasjonalparkstyre	Postboks 987	2626	LILLEHAMMER
Hallingskarvet nasjonalparkstyre	Statsforvalteren i Oslo og Viken, Postboks 1604	3007	DRAMMEN
Ytre Hvaler nasjonalparkstyre	Postboks 325	1502	MOSS
Rohkunborri nasjonalparkstyre	Postboks 137	9365	BARDU
Breheimen nasjonalparkstyre	Postboks 987	2626	LILLEHAMMER
Stabbursdalen nasjonalparkstyre	c/o Statsforvalter Troms og Finnmark, Statens hus	9815	VADSØ
Folgefonna nasjonalparkstyre	Postboks 7310	5020	BERGEN
Ånderdalen nasjonalparkstyre	Postboks 6105	9291	TROMSØ
Nasjonalparkstyret for Fulufjellet	Postboks 4034	2306	HAMAR
Nasjonalparkstyret for Femundsmarka og Gutulia	Postboks 2600	7734	STEINKJER
Seiland/Sievju nasjonalparkstyre	Statsforvalteren i Troms og Finnmark , Statens hus	9815	VADSØ
Nasjonalparkstyret for Øvre Dividal nasjonalpark og Dividalen LVO	Postboks 6105	9291	TROMSØ
Færder nasjonalparkstyre	Statsforvalter Vestfold og Telemark, Postboks 2076	3103	TØNSBERG
Møysalen nasjonalparkstyre	Statsforvalteren i Nordland, Moloveien 10	8002	BODØ
Verneområdestyret for Brattefjell- Vindeggen landskapsvernområde	Postboks 2076	3103	TØNSBERG
Verneområdestyret for Trollheimen	Postboks 2520	6404	MOLDE
Verneområdestyret for Setesdal vesthei, Ryfylkeheiane, Frafjordheiane	Postboks 24	4748	RYSSTAD
Nærøyfjorden verneområdestyre	Njøsavegen 2	6863	LEIKANGER
Vega verneområdestyre	c/o Statsforvalteren i Nordland, Moloveien 10	8002	BODØ
Verneområdestyret for Oksøy-Ryvingen og Flekkefjord landsk.vernområder	Postboks 788 Stoa	4809	ARENDAL
Verneområdestyret for Nordkvaløya- Rebbernesøya landskapsvernområde	Postboks 6105	9291	TROMSØ
Verneområdestyret for Skardsfjella og Hyllingsdalen	Postboks 2600	7734	STEINKJER
Stølsheimen verneområdestyre	Njøsavegen 2	6863	LEIKANGER

Verneområdestyret for Geiranger- Herdalen	Postboks 2520	6404	MOLDE
Verneområdestyret for Lyngsalpan landskapsvernområde	Postboks 6105	9291	TROMSØ
Sølen verneområdestyre	c/o Statsforvalteren i Innlandet, Postboks 4034	2306	HAMAR
Verneområdestyret for Kvænangsbotn og Navitdalen landskapsvernområder	Postboks 6105	9291	TROMSØ
Naustdal-Gjengedal verneområdestyre	c/o Statsforvalteren i Vestland, Njøsavegen 2	6863	LEIKANGER
Ålfotbreen verneområdestyre	Njøsavegen 2	6863	LEIKANGER

Oslo Sportsdykkeklubb
c/o Steven Cooke
sveavegen 89
1263 Oslo

Oslo 19.09.2021

Fylkesmannen i Østfold
Pb 325
1502 Moss

Rapport fra Oslo Sportsdykkeklubb (OSDK) sommerleir på Akerøya 2021

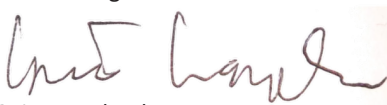
OSDK sommerleir på Akerøya ble i 2021 gjennomført i perioden 16-25 juli 2021. I år som i fjor var det omstendigheter rundt Covid-19 som gjorde at det generelt var mye folk innom på Akerøya. På dagene med fint vær kom det teltgjester med kajakk og båt som teltet på stranden og rundt oss i leiren uten at det ble registrert noe negativt av noe slag.

Antallet medlemmer som var innom var ca det samme som foregående år, med flott dykking fra Søsterøyene og Struten i nord, til Alne i sør. Vi var heldige med været og fikk en uke med strålende sol, og noe vind. Det ble observert mye hummer men litt mindre krabber enn tidligere. Vi så 3 breiflabb på forskjellige dykkeplasser, men lite torsk.

1. Klubbens kompressor ble brukt i korte perioder i perioden 17-24 juli 2021. Kompressoren ble som i tidligere år satt et godt stykke opp i kløften bak huset mot speidersletta, slik at støy ble fanget i kløfta. Iht vedtak ble kompressoren kun brukt i tidsrommet fra ca 10.00 (tidligste) til ca 18.00 (seneste) – fylling på formiddag før dykking, eller ettermiddag etter dykking. Se vedlegg 1 for mer detaljert oversikt.
2. Det var i år som tidligere år lagt ut egne bøyer ved den lille bryggen som var merket med OSDK/AOS/OF Kystled, antatt gjort av Skjærgårdstjenesten. Det ble derfor ikke lagt ut noen egen moring av OSDK, vi festet kun tau i bøye og til land. Moringen som bøylene er festet i ligger på flat sandbunn på ca 1.5 meters dyp i bukten ved søppelskuret på akerøya, ca posisjon (WGS 84, DMM) Bredde koordinat 59 3.0216, Lengdekoordinat 10 53.3634
3. Telting: I perioden 16-25 juli ble det totalt logget 36 teltdøgn
4. I 2021 ble det ikke dregget opp i sone A av OSDK

De av klubbens medlemmer som fikk vært med på OSDK sommerleir 2021 ønsker å takke for en flott opplevelse i flott natur, og velvilje fra Nasjonalparkens styre som lot oss gjennomføre nok en sommerleir.

Med vennlig hilsen



Geir Langeland
Styremedlem Oslo Sportsdykkeklubb.

Vedlegg 1

Oversikt over kompressorbruk OSDK sommeren 2021

Dato	Start tid	Stopp tid	Antall timer
17. juli 2021	10:30	13:00	2,5
18. juli 2021	10:00	13:00	3,0
18. juli 2021	16:00	18:00	2,0
19. juli 2021	15:00	17:00	2,0
20. juli 2021	10:00	12:00	2,0
21. juli 2021	15:00	17:00	2,0
22. juli 2021	10:00	11:30	1,5
23. juli 2021	10:00	12:00	2,0
24. juli 2021	13:00	15:00	2,0

Spjærbekken, Hvaler kommune

26.09.2021



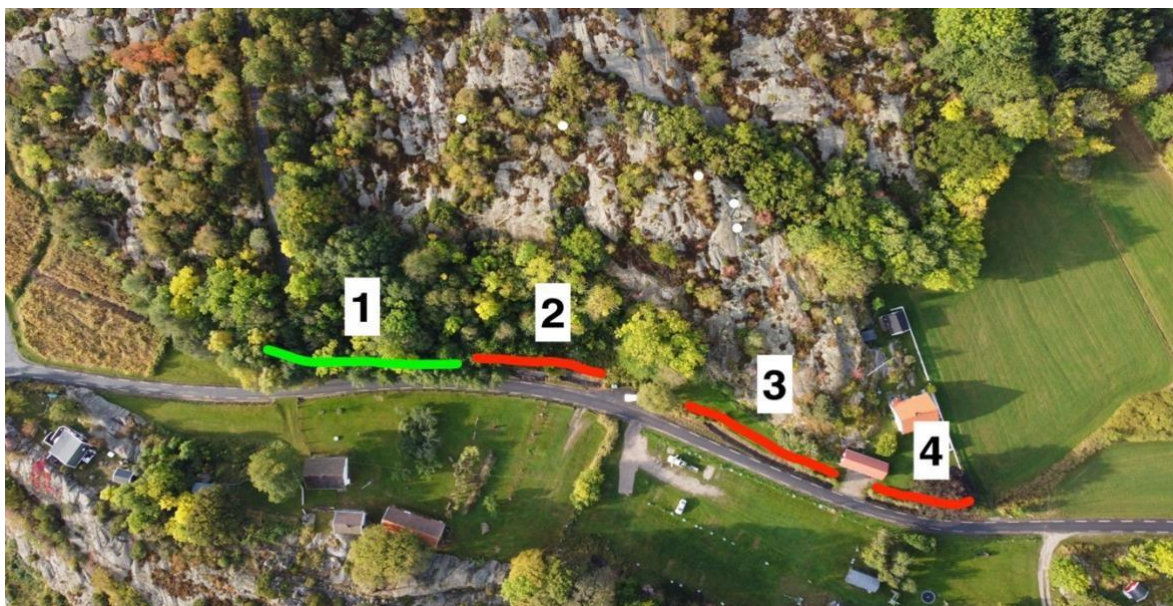
INNLEDNING

Spjærbekken ligger på Spjærøya i Hvaler kommune. Bekken er ca. 850 meter lang. De øvre deler bærer preg av å være kanalisert igjennom landbruksareal. Fra bakkens utløp i Spjærøya-kilen og ca 250 meter opp i bekken er registrert som et sjøørretførende område. Bekken er registrert i naturbase som et viktig bekkedrag. ID: BN00119779. Registreringsdato 24.10.2011. Fakta ark naturbase er vedlagt. Spjærbekken er den eneste sjøørretførende bekk på Hvaler som renner ut i Ytre Hvaler Nasjonalpark. Statsforvalter presiserer i rapport datert 24.10.2011 følgende. «Mulige trusler mot sjøørretbestanden i Spjærbekken vil kunne være menneskelige inngrep av ulik art i den delen av bekkesystemet som ligger utenfor grensene til nasjonalparken, dvs. fra munningen og oppover. Det er derfor viktig at Hvaler kommune har fokus på fiskeinteressene og fiskens leveområder i sitt planarbeid, slik det er krav om i henhold til Lov om laksefisk og innlandsfisk mv. av 15. mai 1992, § 7.»

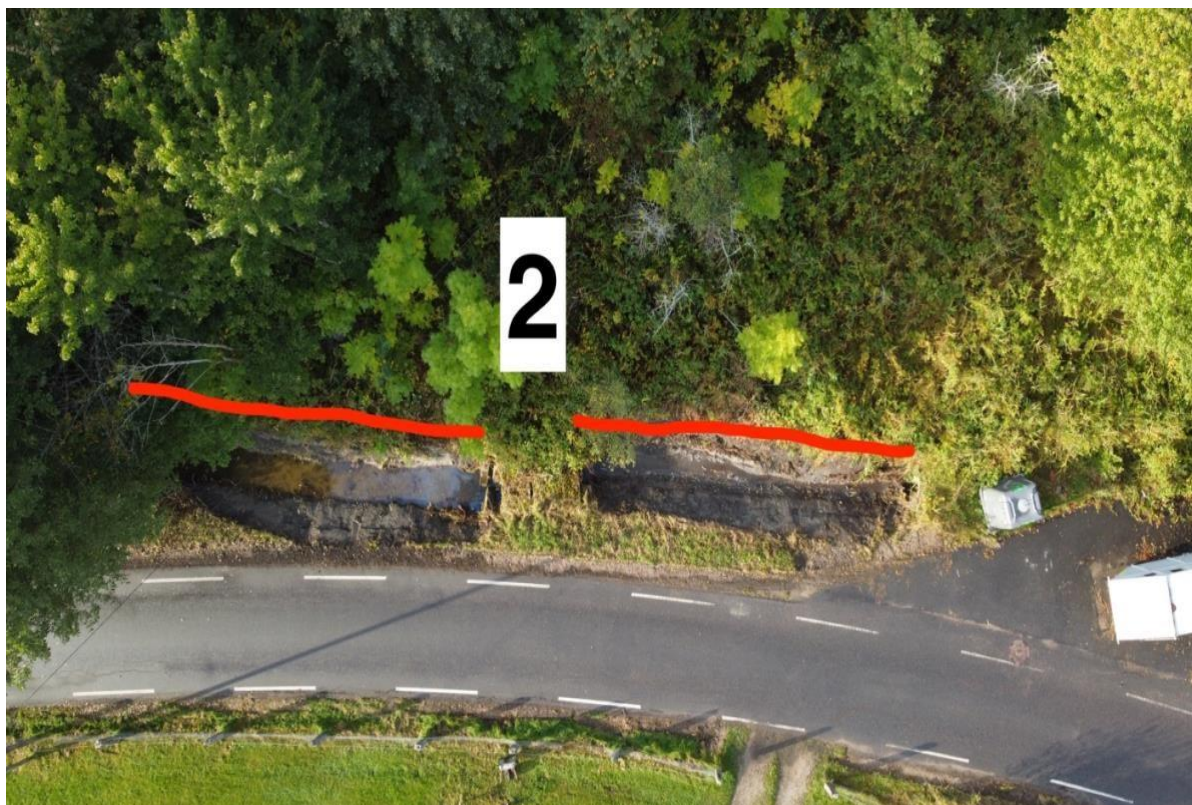
Det er nå (september 2021) gjennomført betydelige gravearbeider i Spjærbekken, utført av Mesta AS. Store deler av sjøørretførende bekker gravd ut med gravemaskin. Arbeidene faller inn under definisjonen av vassdragstiltak etter vannressursloven §3. Et slikt vassdragstiltak forutsetter at det er gitt konsesjon fra vassdragsmyndigheten. Det er ikke søkt om konsesjon eller på annen måte tatt hensyn til sjøørretbestanden i forbindelse med arbeidene. Arbeidet er derfor ulovlig utført. Utgravingen av bekken har skjedd i forbindelse med veiarbeider i området. Mesta AS erkjenner forholdet, de beklager det inntrufne. Mesta AS har gitt en foreløpig muntlig bekreftelse der de vil stå for utgifter i forbindelse med rehabilitering av de pårørte området.

OMRÅDEBESKRIVELSE

Rosareke Foreningen for Sjøørretens Venner har inspisert de fire avmerkede delene av Spjærbekken som er direkte eller indirekte berørt av gravearbeidene utført av MESTA AS:



1. Registrerte gyteområder for sjøørret. Innslag av saltvann nedenfor grønn markering.
2. Tidligere gyteplasser for sjøørret. Nå fjernet i forbindelse med utgraving av bekkeløp.
3. Tidligere gyteplasser og oppvekstområder for sjøørret. Nå fjernet i forbindelse med utgraving av bekkeløp.
4. Tidligere oppvekstområder for sjøørretyngel. Nå fjernet i forbindelse med utgraving av bekkeløpet.

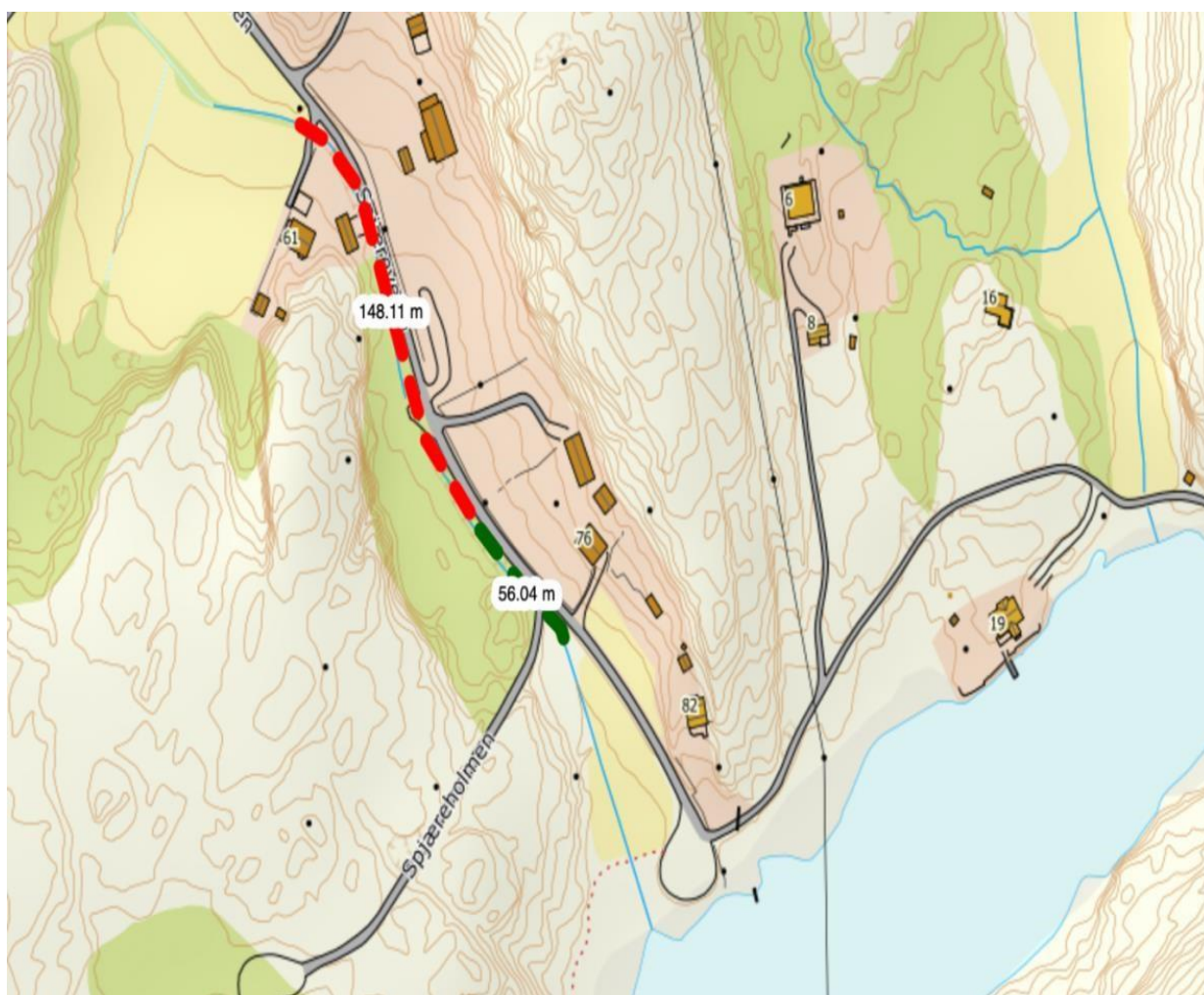




UTFORDRINGER

Ved utgraving av områdene vist ovenfor er gyteplasser og oppvekstområder for sjøørreten fjernet. Før utgraving hadde området en variert økologisk tilstand, området er nå som bildene ovenfor viser en kanalisert monokultur. Utfordringene ved en slik utgraving er mange.

1. **Gyteområdene** til sjøørreten er fjernet.
2. **Habitater** som sikrer overlevelse av sjøørretyngel, er borte.
3. **Habitater** som sikrer et leveområde for insekter, er fjernet.
4. **Blottleggelse** av bekkebredden vil påføre det nederste grønne strekket (1) store problemer som følge av uønsket avrenning av løs masse.
5. **Tidspunktet for utgravingen er dessuten verst tenkelig.** Høsten er gytetiden for sjøørreten og bekkene er dessuten i denne perioden svært utsatt for avrenning på grunn av betydelig nedbørsmengder. Statsforvalters anbefaling er derfor at sjøørretbekker ikke blir utgravd i gytetiden fra 15. august til 15. november.



Kartutsnitt over viser det berørte området markert i rødt. Berørt lengde ca. 140 meter. **Utgravd bekk ca 100 meter.** Det siste gjenværende som foreløpig kan anses som et habitat for sjøørret etter saltvanns innslag er merket i grønt, og har en lengde på ca 50 meter. Dette området er imidlertid nå kritisk utsatt for avrenning av store mengder løs masse og må også anses som tapt som habitat for sjøørret. **Utgravingen vil med andre ord permanent ødelegge Spjærrebekken som sjøørretbekk.**

OPPSUMMERING OG FORSLAG TIL LØSNING

Arbeidene som er utført i Spjærbekken er ulovlige. $\frac{3}{4}$ av området som tidligere har fungert som et habitat for sjøørret er ødelagt, og den resterende $\frac{1}{4}$ vil bli ødelagt som følge av avrenning fra det allerede ødelagte området.

Sjøørretbestanden i Spjærbekken kan reddes dersom det gjøres umiddelbare habitatforbedrende tiltak.

Rosareke Foreningen For Sjøørreten Venner kan, med praktisk støtte og økonomisk bistand fra MESTA AS lage en komplett habitatforbedrende plan og utføre de nødvendige habitatforbedrende tiltak som er nødvendige for å redde sjøørretbestanden i Spjærbekken. Rosareke Foreningen For Sjøørreten Venner har en stående betinget tillatelse til å utføre habitatforbedrende tiltak i sjøørretbekkene på Hvaler, og de nødvendige kontakter i kommunen, Vannområdet, Nasjonalparken og Statsforvalteren til å få en plan for arbeidet godkjent innen kort tid. Foreningen kan videre påta seg nødvendig oppfølging og vedlikehold av bekken i de kommende tre år, herunder en kartlegging av fisketetthet i form av elfiske undersøkelser. Arbeidet vil ledes av foreningens daglige leder Bjørn Tore Kjølholt. Rosareke har mange års erfaring med å habitat forbedre bekker i Hvaler kommune. Vi kan fremvise meget gode resultater. Arbeidet foreslås utført mot løpende dekning av Foreningens kostnader innenfor godkjent budsjett.

- **Når skadene først er gjort må målet være å tilbake stille bekken til en god økologisk tilstand. Bruke denne muligheten til å gjøre bekken om til et så godt habitat som mulig for sjøørreten og annet biologisk liv. Vi bør og bruke muligheten til å flomsikre området og samtidig hindre takrør i å etablere seg i bekkeløpet.**
- **Rosareke foreningen for sjøørretens venner kan ta på seg oppgaven med å utforme en habitatforbedrende plan for hele området.**

FORESLÅTT TILTAK

Utgravd område må habitatforbedres for å redde bekken som gyteområde og oppvekstområde for sjøørreten og det tilhørende biologiske mangfoldet. Arbeidet er omfattende og tidskrevende. Arbeidet vil og ha behov for vedlikehold de neste 2 til 3 sesonger.

Nødvendige tiltak er:

- Reetablering av gyteplasser, kulper og skjuleplasser
- Bekkeløpet bør sikres slik at takrør ikke etablerer seg. Dette er og til det beste for riksveien.
- Etablering av en miks av riktig type habitat slik at insekts livet kan reetableres
- Erosjonssikring av hele bredden

Spjærbekken er en typisk Hvalerbekk med årssikker vannføring, men er preget av lange perioder med lav vannstand. **Bekken er også svært utsatt for flom.** Slike små bekker krever **helt spesielle tiltak** som hensyntar disse **lokale forholdene**. Det er viktig at bekken får en korrekt balanse mellom gyteområder og oppvekstområder.

Det er avgjørende at tiltakene blir utført umiddelbart. Deretter må de berørte områdene vedlikeholdes i minst 3 år. Bekken lever sitt eget liv, de habitatforbedrende tiltakene må følges opp og tilpasses etter hvert som bekken og elementene som skapes får «**satt**» seg.

HABITATFORBEDRENDE TILTAKSPLAN

Detaljert tiltaksplan er under konstruksjon. Dette i samarbeid med elever fra NMBU.