

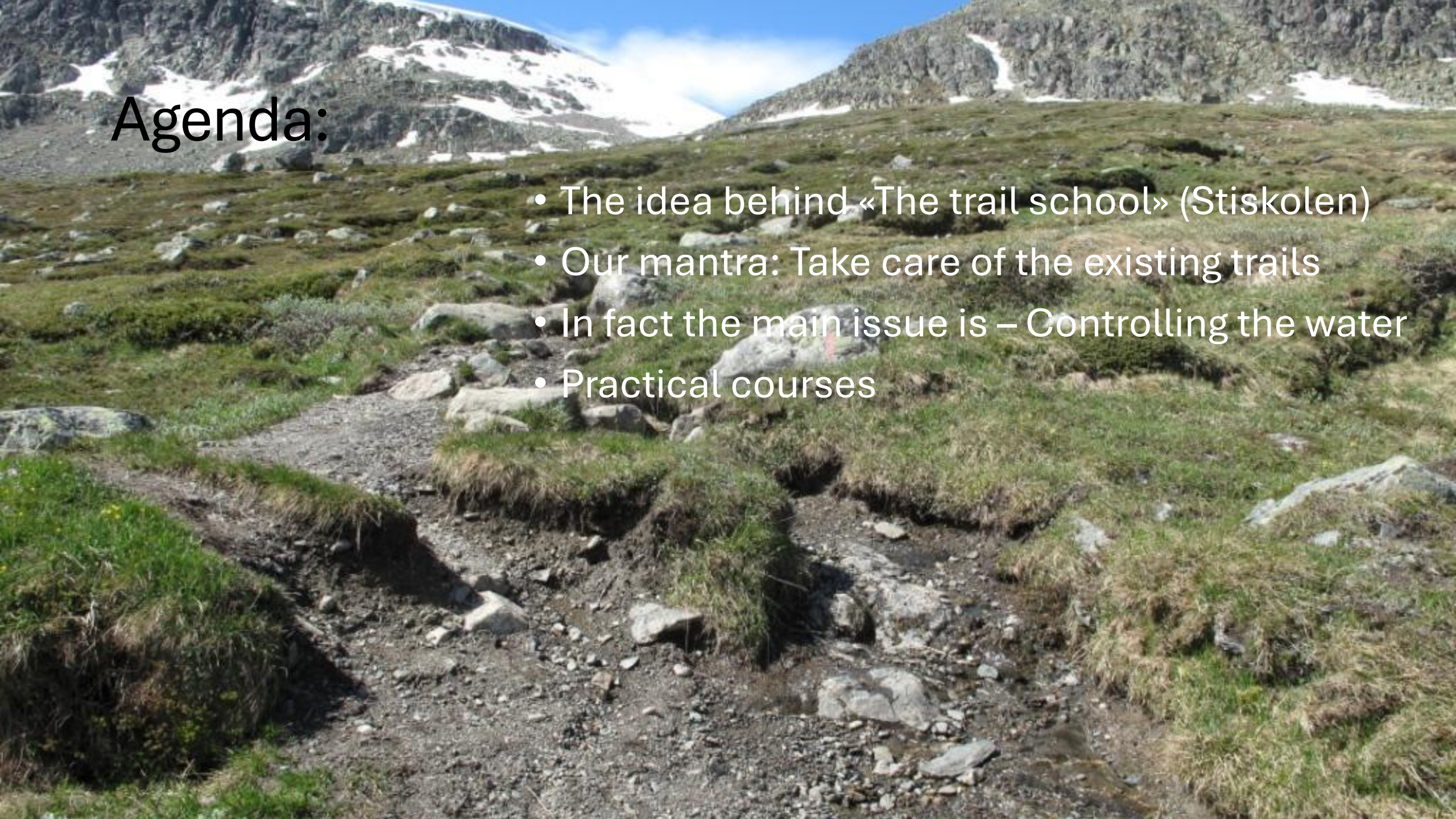
The right trail on the right place

Welcome to «Stiskolen»(The trail school)

Petter Braaten, Senior adviser

Agenda:

- The idea behind «The trail school» (Stiskolen)
- Our mantra: Take care of the existing trails
- In fact the main issue is – Controlling the water
- Practical courses



The idea of «the trail school»



Central guidelines is produced

- Contains important information about how to....
- Gives a lot of guidelines for what to do, how to do it and how to plan for it.
- Visitor management
- Etc.

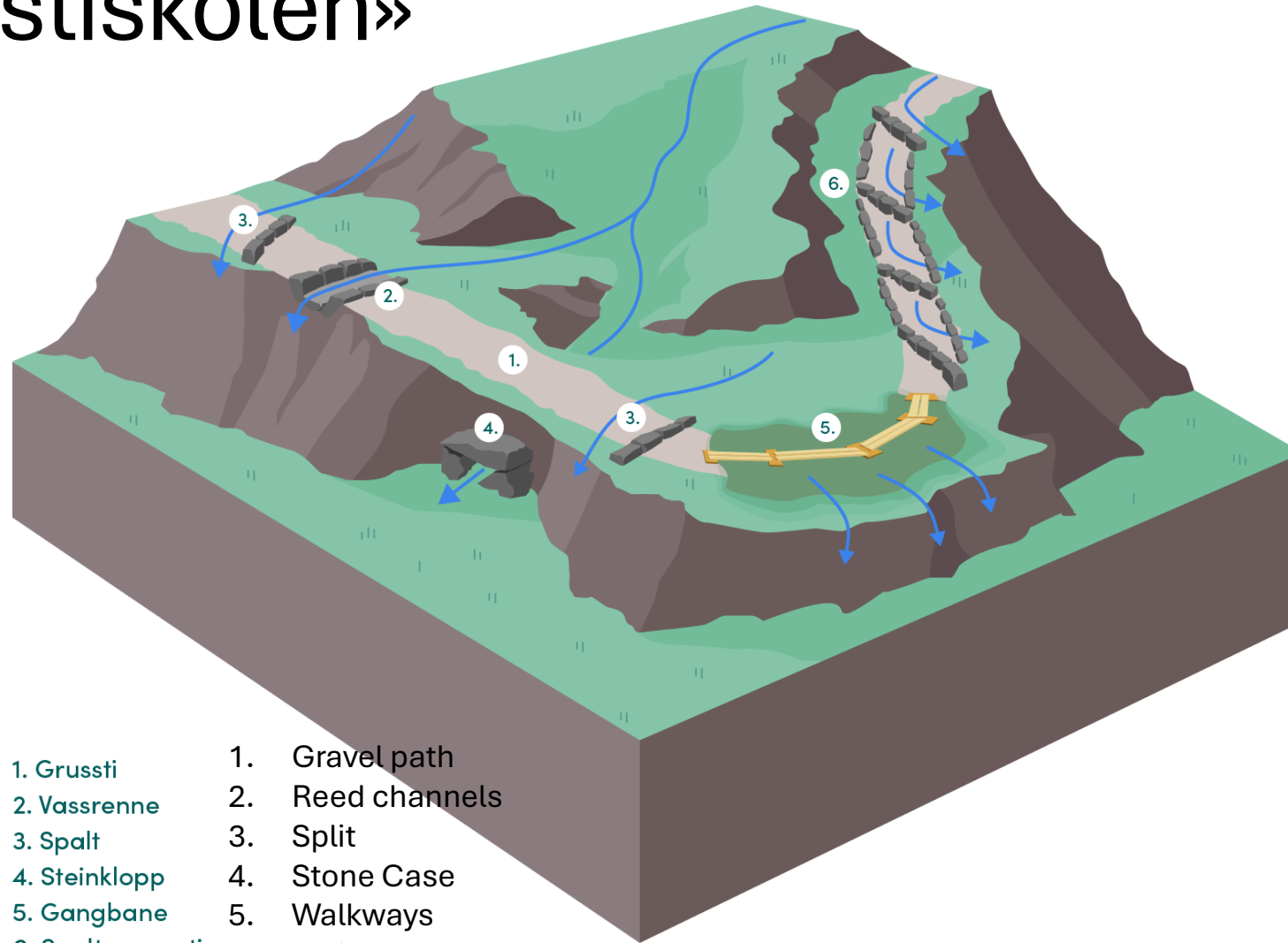




We wanted to make it easier available

- We made it interactive
- We started filming and produced instruction videos
- It was launched on www.milodirektoratet.no last year.

From «stiskolen»



- | | |
|-------------------|----------------------|
| 1. Grussti | 1. Gravel path |
| 2. Vassrenne | 2. Reed channels |
| 3. Spalt | 3. Split |
| 4. Steinklopp | 4. Stone Case |
| 5. Gangbane | 5. Walkways |
| 6. Spalta grussti | 6. Split gravel path |

- Home page

Shorts

Subscriptions
- You >
- Log

Playlists

Videos

Your movies

Watch later

Liked videos
- Subscriptions
- 2 TV 2

Zhong

CboysTV


McCreamy

The Rabbit Hole

Portal

Tehdit Gaming

Show more
- Explore



Velkommen til stiskulen

Stiskulen


by the Norwegian Environment Agency

Playlist • 9 videos • 803 plays

The trail school gives you advice on how to take care of the trail you have, different facilitation methods and ... more

▶ Play all


- 1



Velkommen til stiskulen

Welcome to the Trail School


Norwegian Environment Agency • 491 plays • 3 years ago
- 2



Maintained trails: 4 tips for the trail caretaker

Maintained trails: 4 tips for the trail caretaker


Norwegian Environment Agency • 349 plays • 1 year ago
- 3



How to start a trail project

How to start a trail project


Norwegian Environment Agency • 353 plays • 3 years ago
- 4



How to build a gravel path

How to build a gravel path


Norwegian Environment Agency • 454 plays • 3 years ago
- 5



How to build walkways


How to build walkways

Norwegian Environment Agency • 604 plays • 3 years ago
- 6



How to build a stone staircase

How to build a stone staircase

Norwegian Environment Agency • 7k plays • 3 years ago
- 

How to build a split gravel path

How to build a split gravel path

Norwegian Environment Agency • 746 plays • 3 years ago

<https://www.youtube.com/watch?v=6kZy3jRsoVQ&list=ecgvGqdo5jWCcJ6PXtIMitW2puvQAxs&index=2>



Welcome to the Trail School

Welcome to the Trail School

Norwegian Environment Agency • 1/9

Practical trail courses

- Two times a year
- About 20 participants
- 2-3 instructors
- 3 days totally
- The typical course site is a trail start with a parking lot.
- We transport different materials into the site in advance
- We pray for good weather.



Content of the course

- Teoretical – 2 hours
- Walk and talk
- Start digging – only handtools
- Rotation of people during two full days.
- Discussions about solutions all the time. There is no absolute truth.
- We try to make the entry point finished.



Equipment



Reed channel



Stonetrail



A hiker is seen from behind, walking away on a gravel trail. The hiker is wearing black shorts, black socks, and brown hiking boots. The trail is made of light-colored gravel and dirt, with several large, flat rocks placed along its edges. The trail is surrounded by lush green vegetation, including grass, moss, and small plants. In the background, there are more rocks and a glimpse of a body of water through the trees.

Splitted gravel trail

Wet areas







Extrem makeover

Practical course in Sandane

10-13.june 2025





