

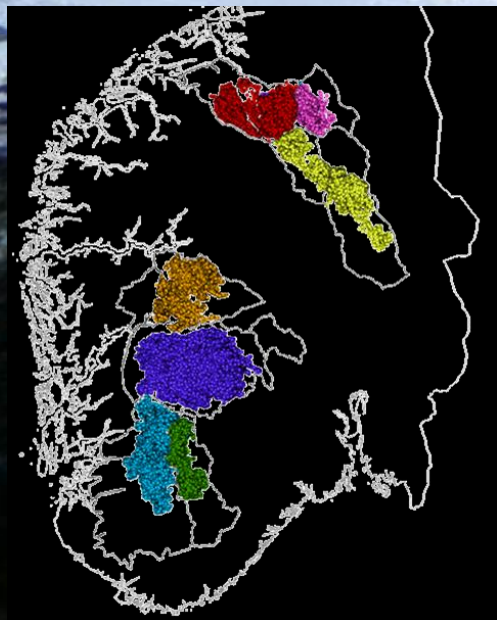


# Villrein og ferdsel – av relevans for Reinheimen

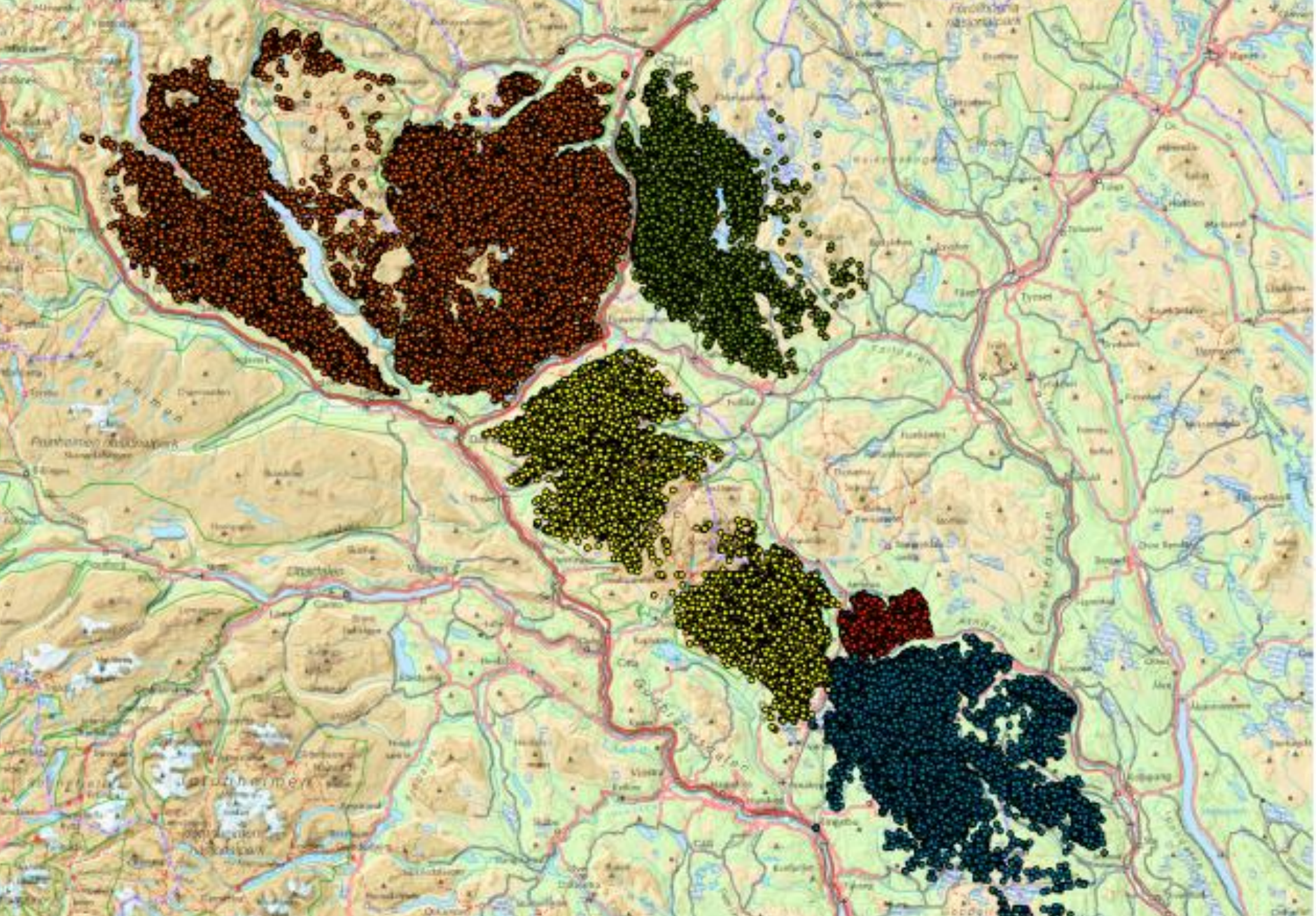
Vegard Gundersen, Olav Strand, Yosra Zouhar

Ser det mørkt ut for villreinen?









Strand m.fl. 2013, 2015a, 2015b







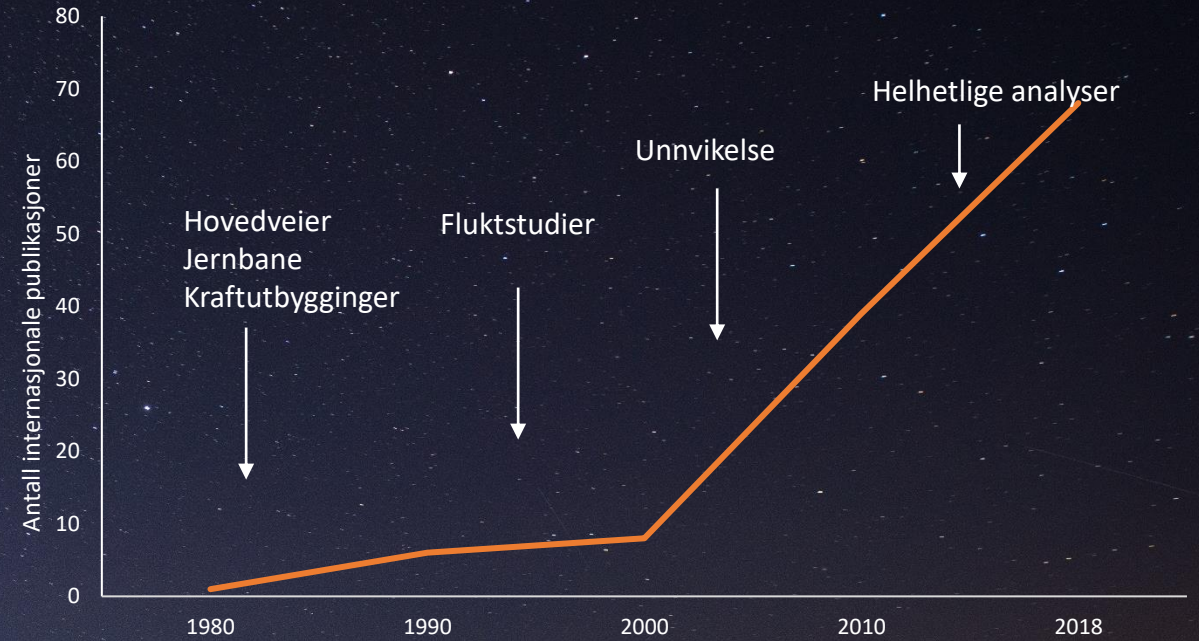








## Studier på forstyrrelse villrein/tamrein i Fennoskandia



Snøhetta

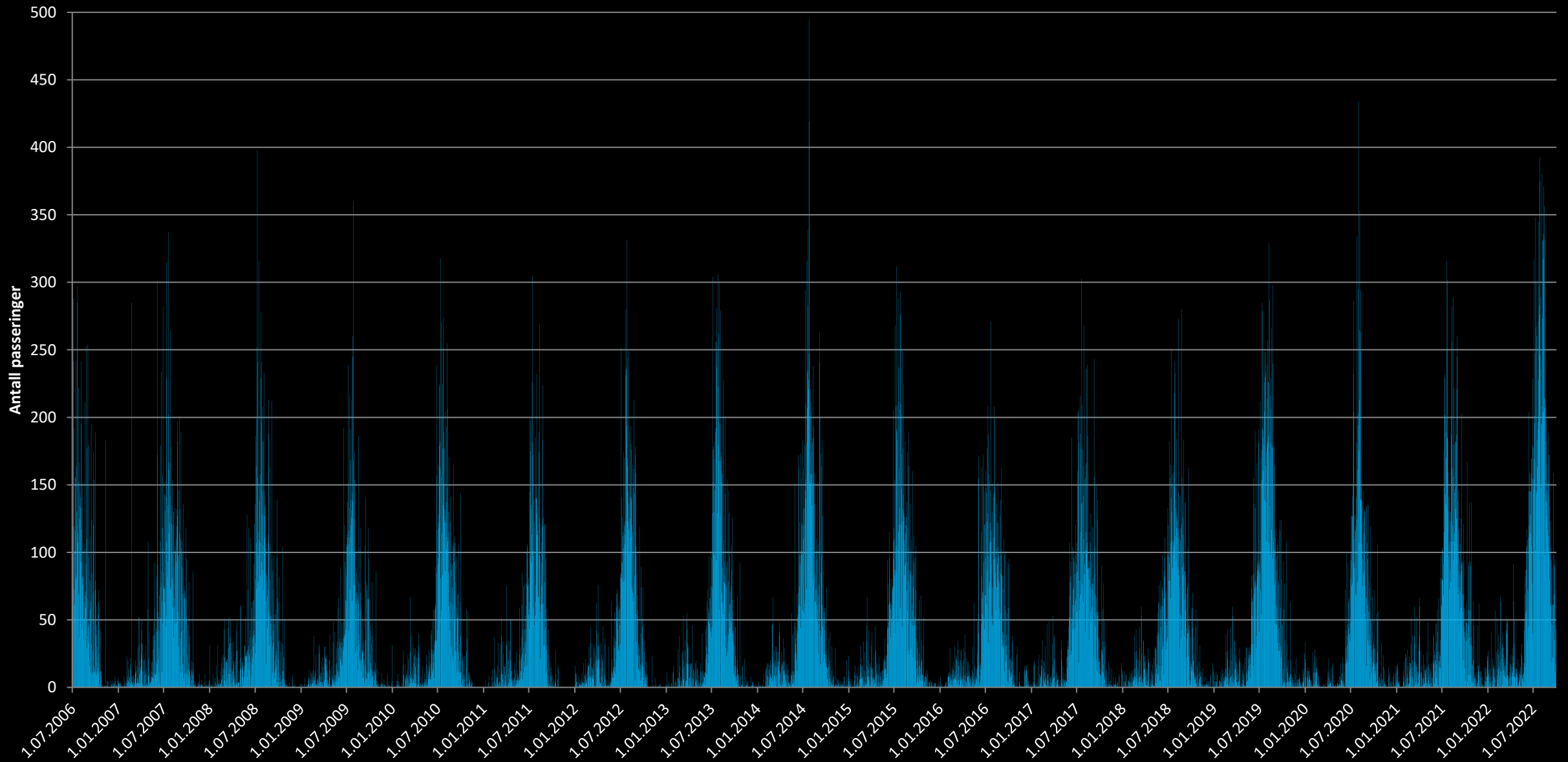
Knutshø





Oppkjørt skiløype





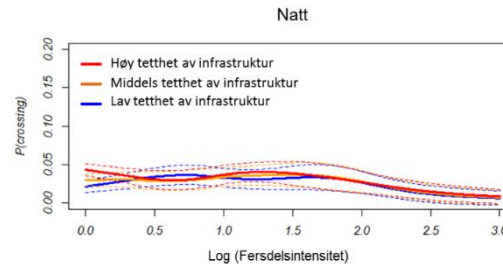
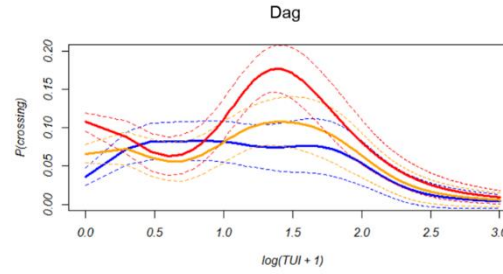
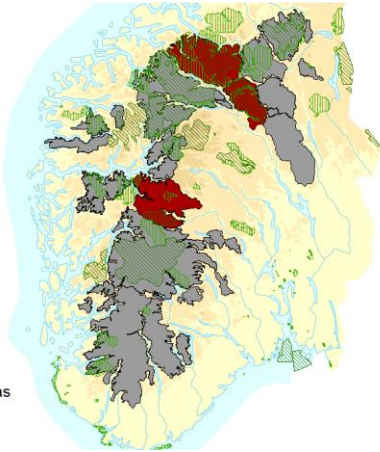


# Barriereeffekter av stier

Snøhetta  
Rondane  
Nordfjella

**Legend**

- Study areas
- Other wild reindeer areas
- National parks
- Protected landscapes

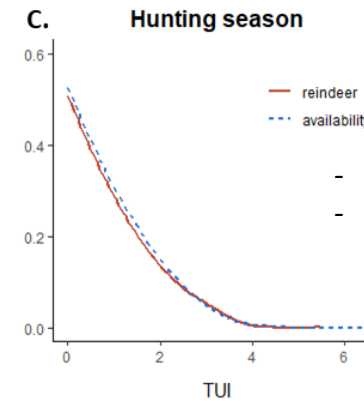
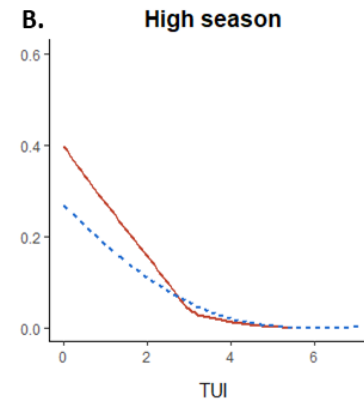
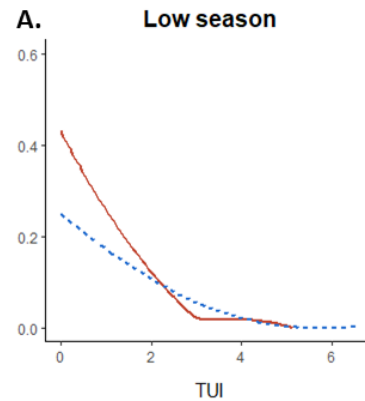
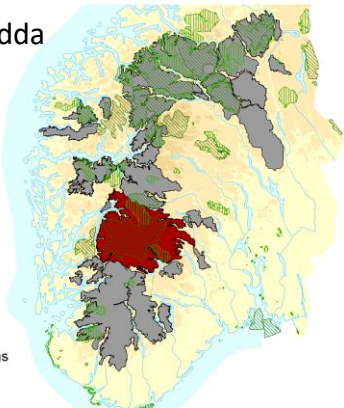


- Økende tetthet av stinett – økende effekt på reinen
- Færre en 20 personer / dag – dytter på reinen, krysser mer
- 20-30 personer / dag – når topp antall kryssinger
- Mer enn 30 personer / dag – krysningsfrekvensen synker
- Mer enn 200 personer / dag – ikke registrert kryssing

Hardangervidda

**Legend**

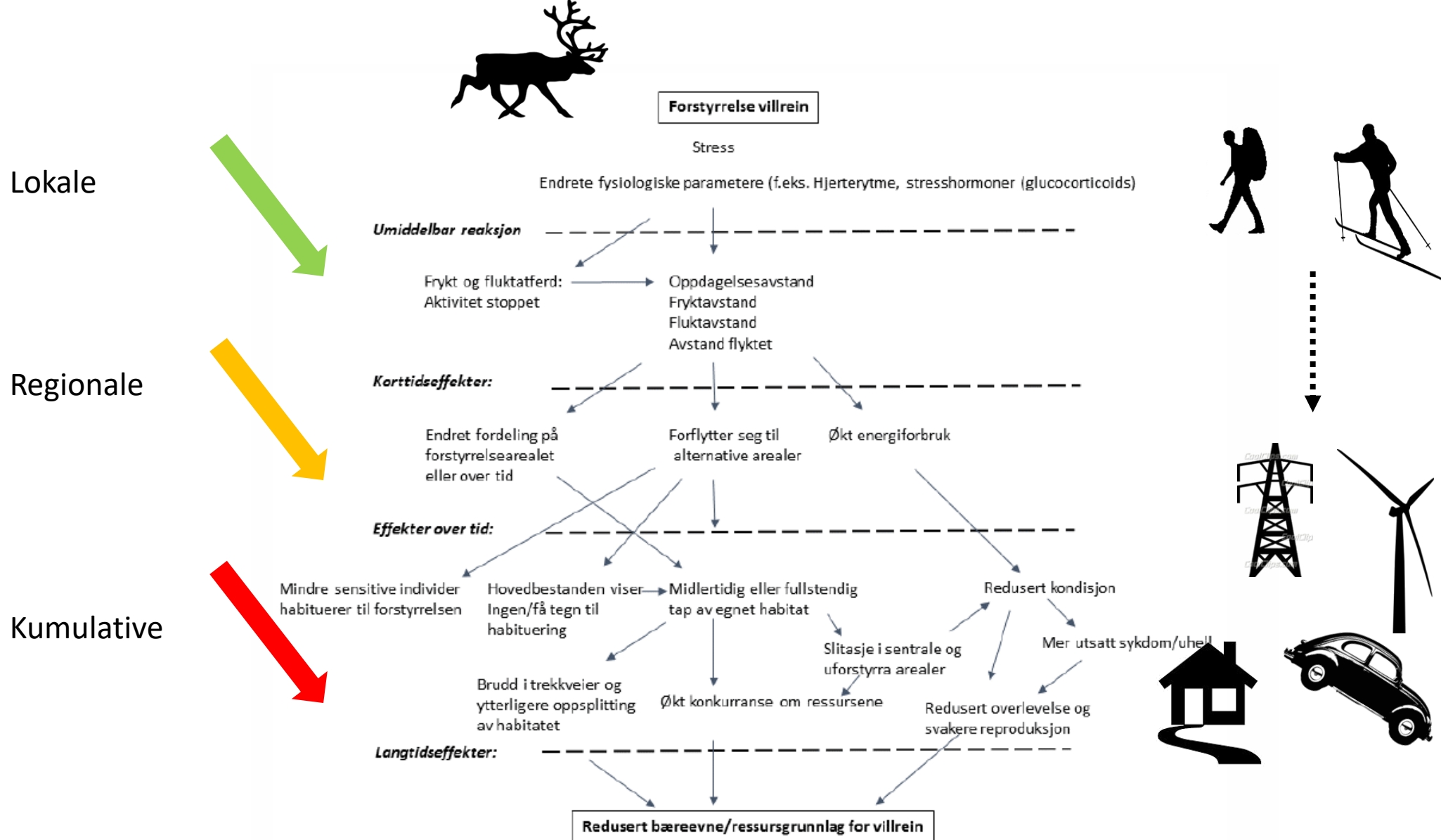
- Study areas
- Other wild reindeer areas
- National parks
- Protected landscapes



- Samme resultat som over
- Ingen effekt i jakttiden

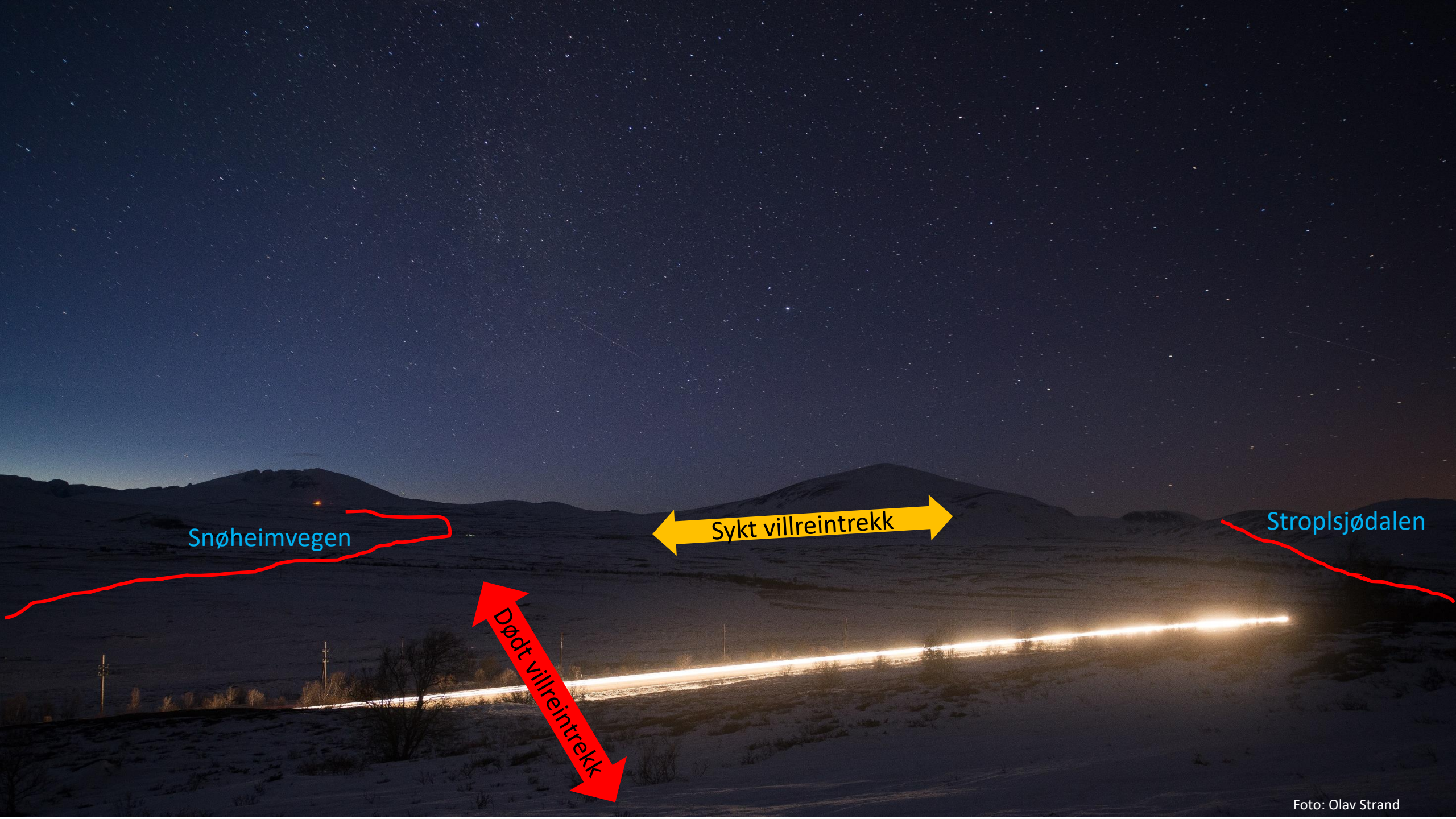
Gundersen, V., Myrvold, K. M., Rauset, G. R., Selvaag, S. K. & O. Strand. 2020. Spatiotemporal tourism pattern in a large reindeer (*Rangifer tarandus tarandus*) range as an important factor in disturbance research and management, *Journal of Sustainable Tourism*





**Figur 3.6.2.** Prinsippfigur som illustrerer hvilke responser og effekter villreinforskerne har vært opptatt av i forhold til menneskelige forstyrrelser.





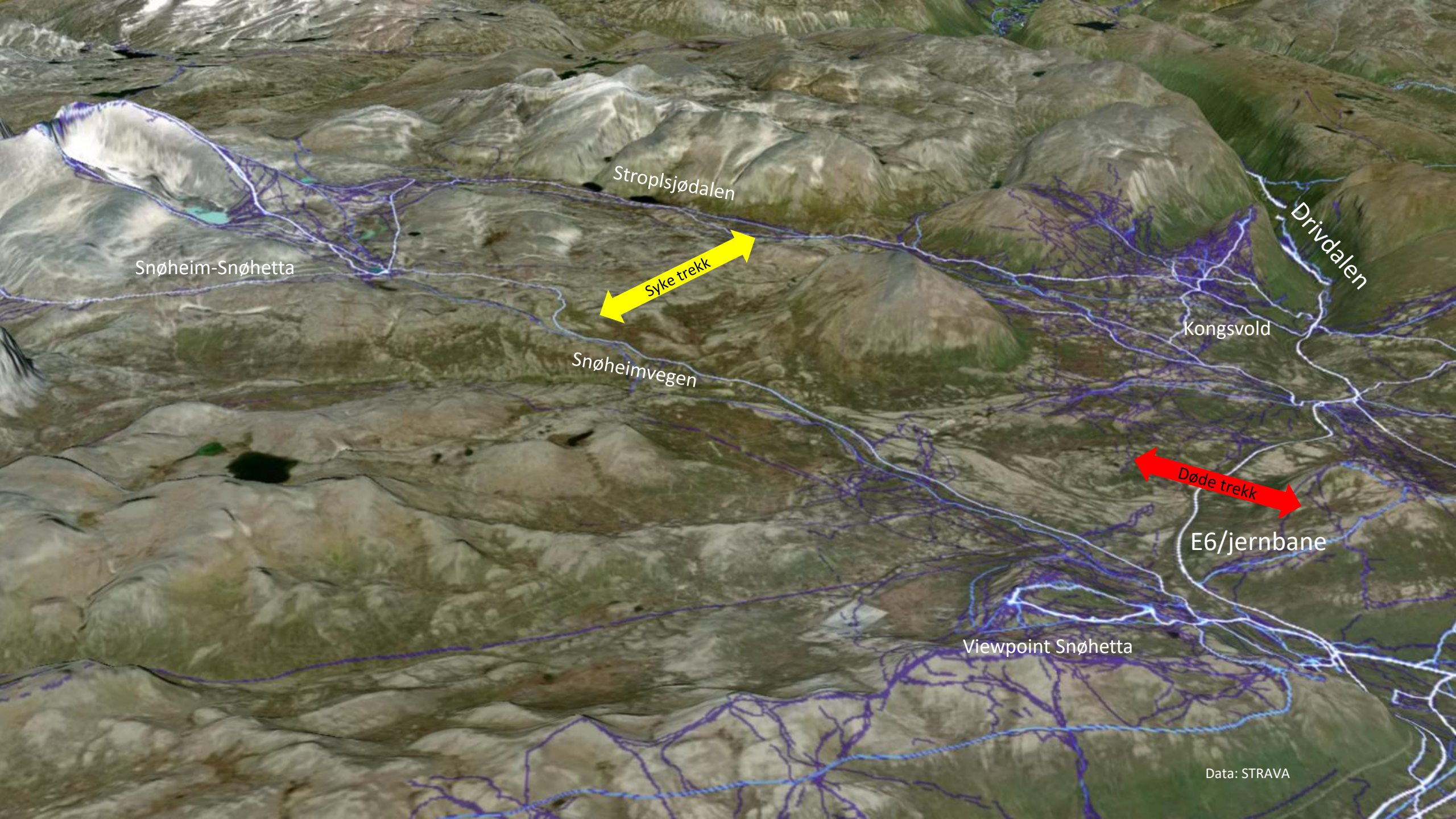
Snøheimvegen

Sykt villreintrekk

Stropsljødalen

Dødt villreintrekk





Snøheim-Snøhetta

Stropplsjødalen

Syke trekk

Snøheimvegen

Kongsvold

Drivdalen

Døde trekk

E6/jernbane

Viewpoint Snøhetta

Data: STRAVA





Stroplsjødalen

Moskustien

Kongsvold stasjon

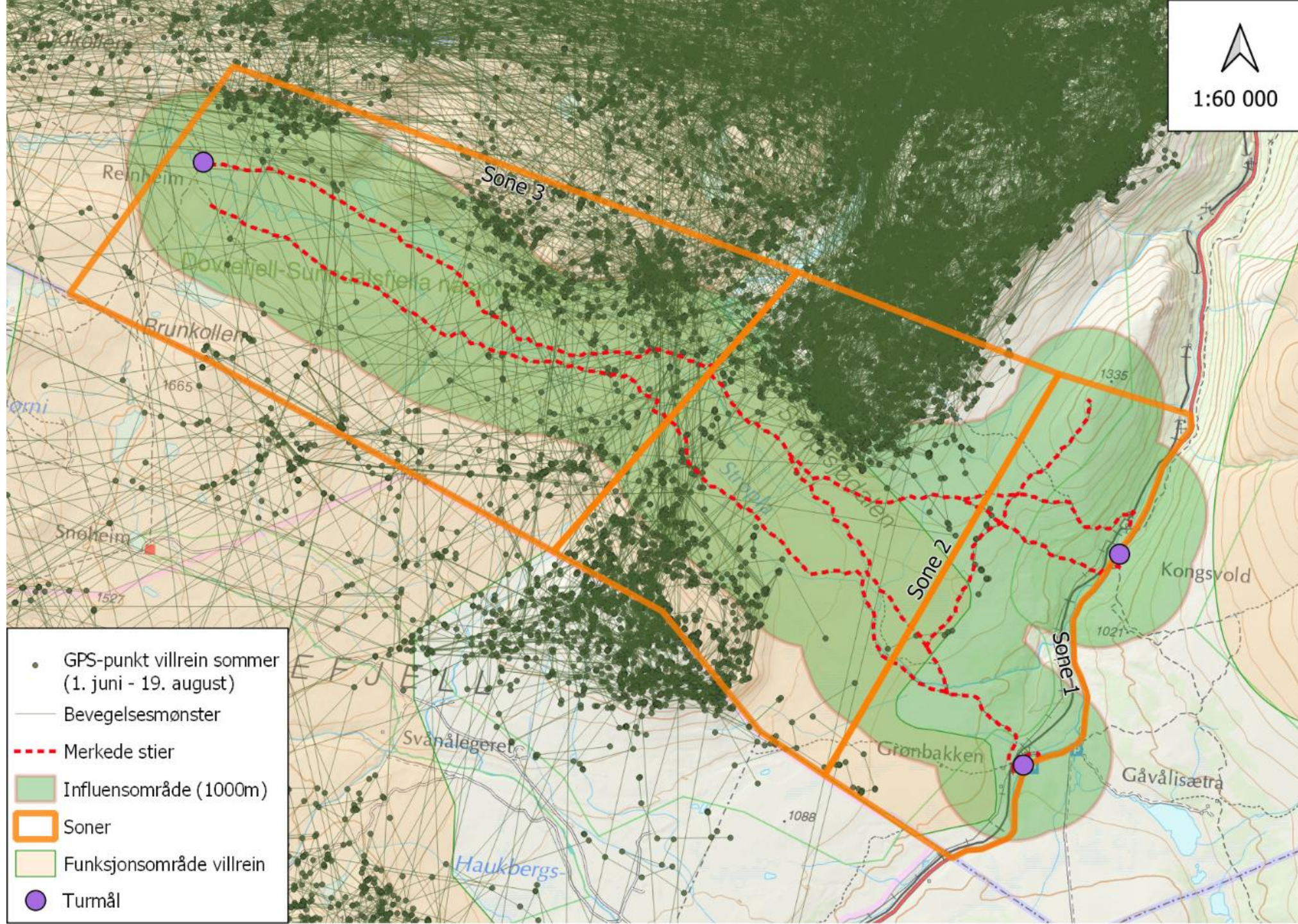
Kongsvold fjellstue

Grønnbakken

Drivdalen

Data: STRAVA





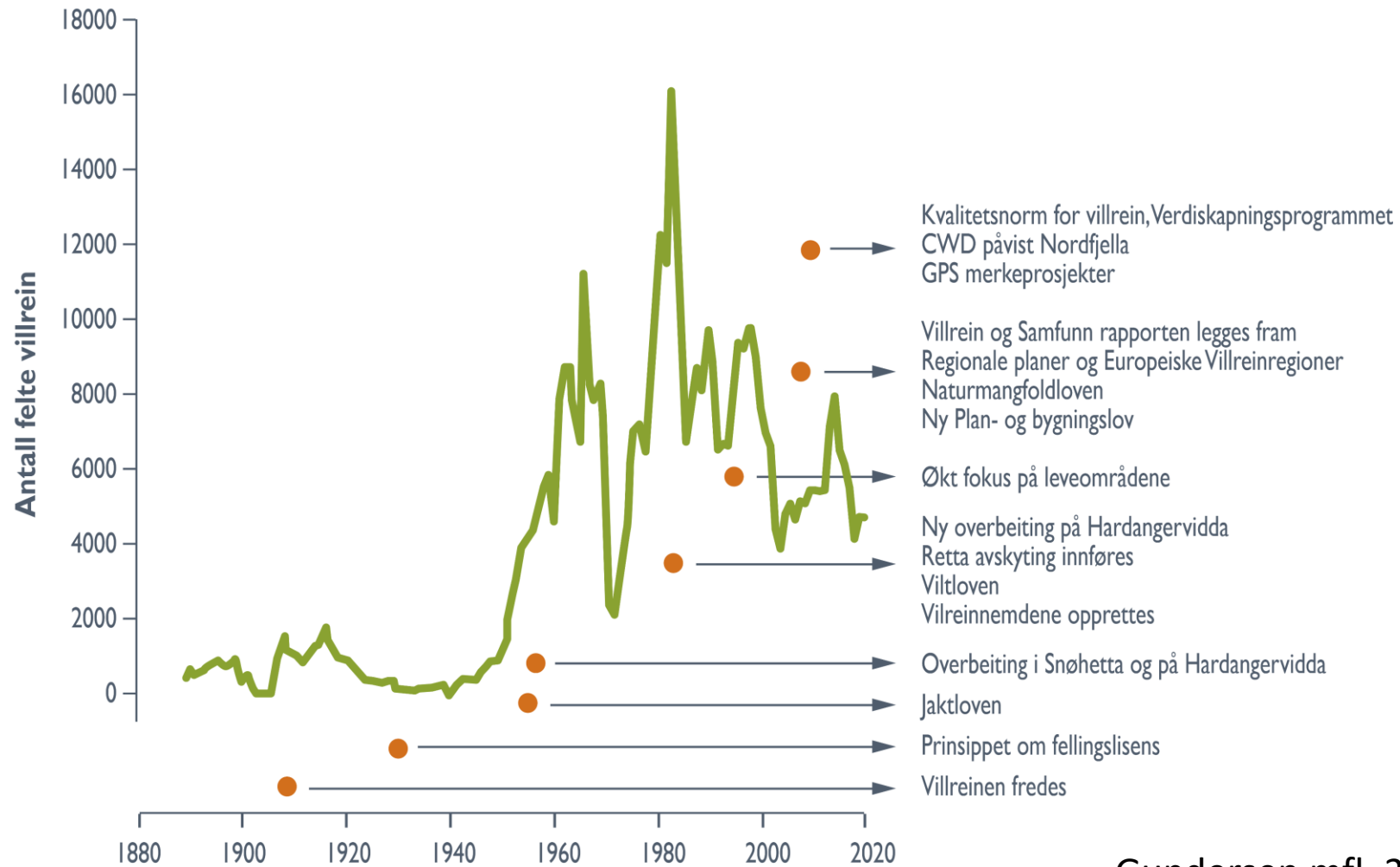
- GPS-punkt villrein sommer (1. juni - 19. august)
- Bevegelsesmønster
- Merkede stier
- Influensområde (1000m)
- Soner
- Funksjonsområde villrein
- Turmål







# Historikk



Gundersen mfl. 2021





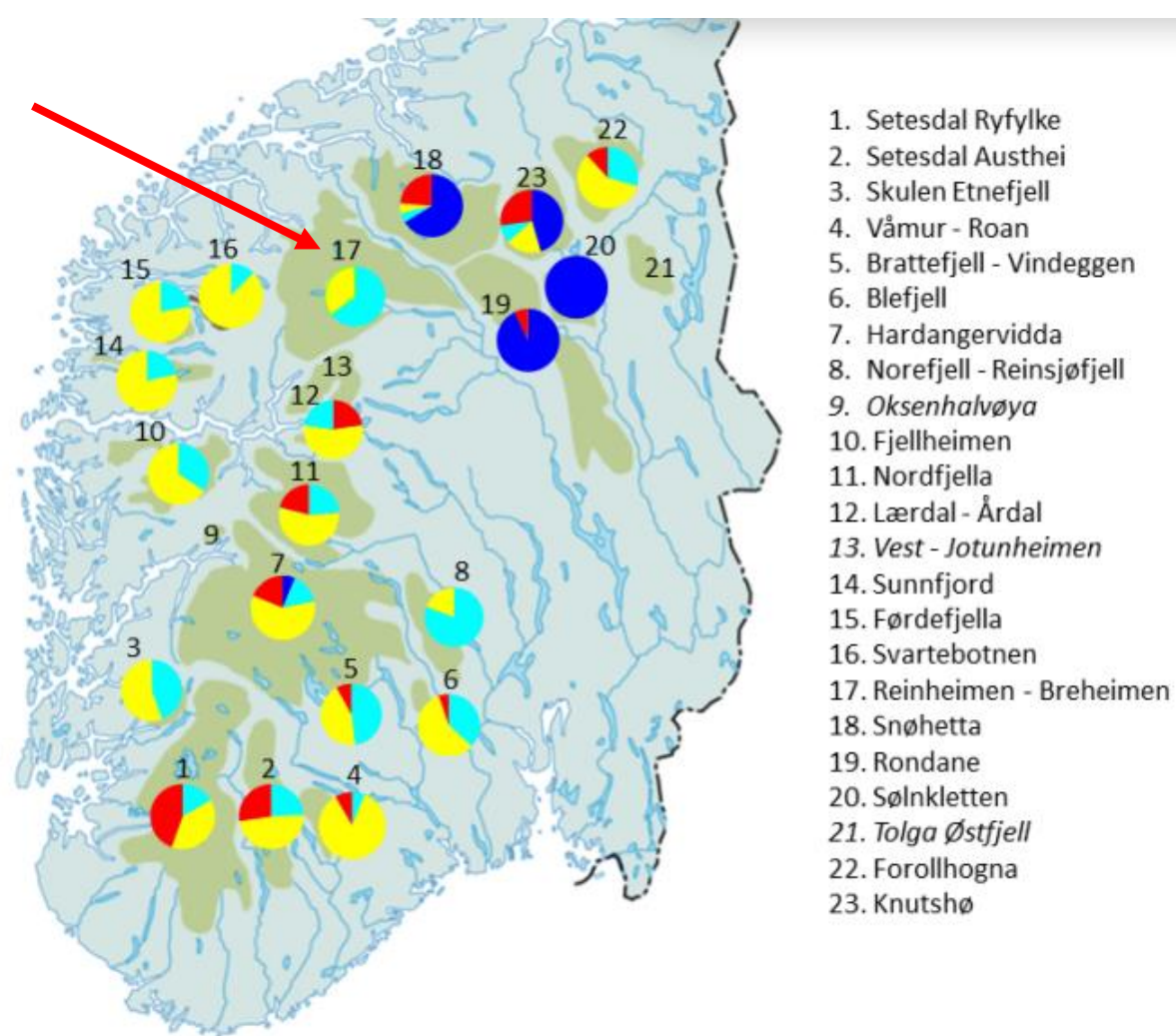
1910-1940?

Kirkestuen Hotel. Dovre st.

Enslat: fot. Jopamo.



Reinheimen



Resultatene fra DNA mikrosatellitt analysene viste at den genetiske hovedstrukturen gjennom Eurasia var en oppdeling i tre genetiske hovedbestander hvor reinen i Dovre/Rondane regionen (Snøhetta, Knutshø, Sølnekletten og Rondane) utgjorde den ene hovedbestanden. Andre villreinstammer i Norge pluss tamrein utgjorde den andre, mens russisk villrein og tamrein i hovedsak utgjorde den tredje genetiske hovedbestanden (Røed mfl. 2008).

**Figur 3.4.1.** Kakediagrammer som angir fordeling av mtDNA-haplotypehovedgrupper i norske villreinstammer (bestander i kursiv er ikke undersøkt). Bestandene i Dovre/Rondane-regionen er karakterisert av å ha høy frekvens av haplotypehovedgruppe Ia (blått). Haplotypehovedgruppe Ib (turkis) og II (gult) er mtDNA-hovedgruppe som er typisk utbredt hos tamrein. Haplotypehovedgruppe I (rødt) er typisk utbredt i Langfjella-regionen og til dels også i Dovre/Rondane (revidert data fra Kvie 2017).



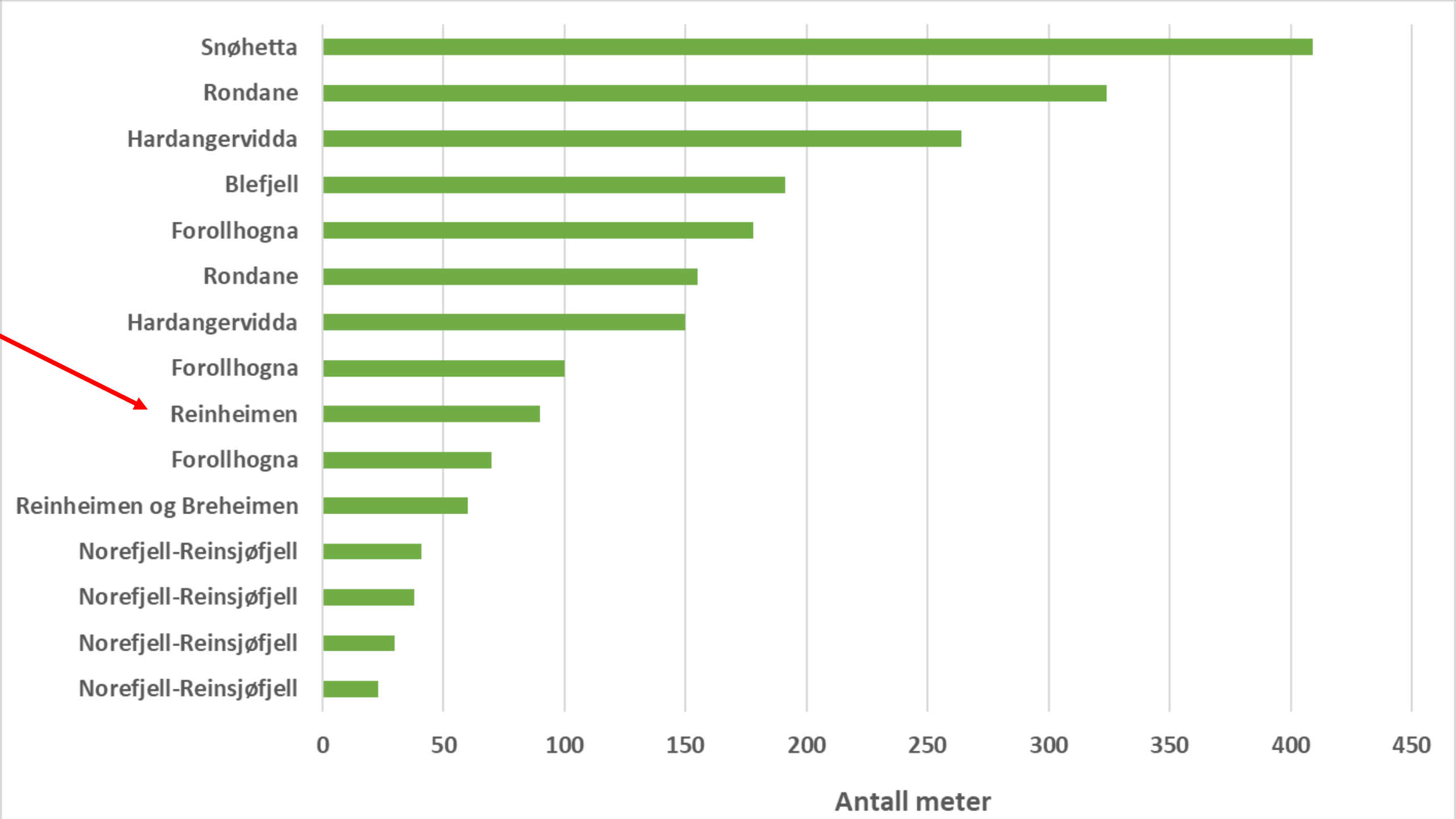








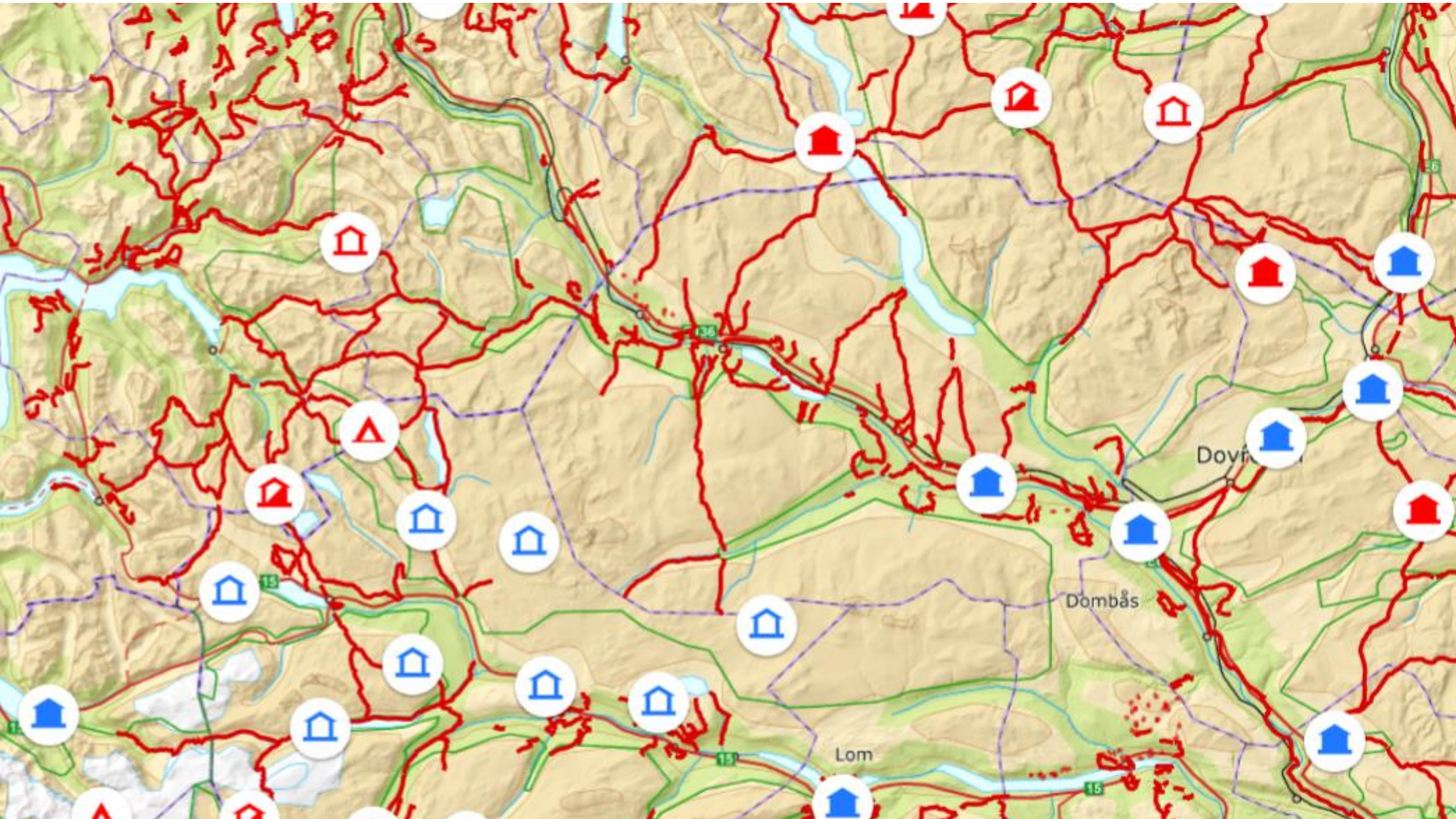


Foto: Vegard Gundersen









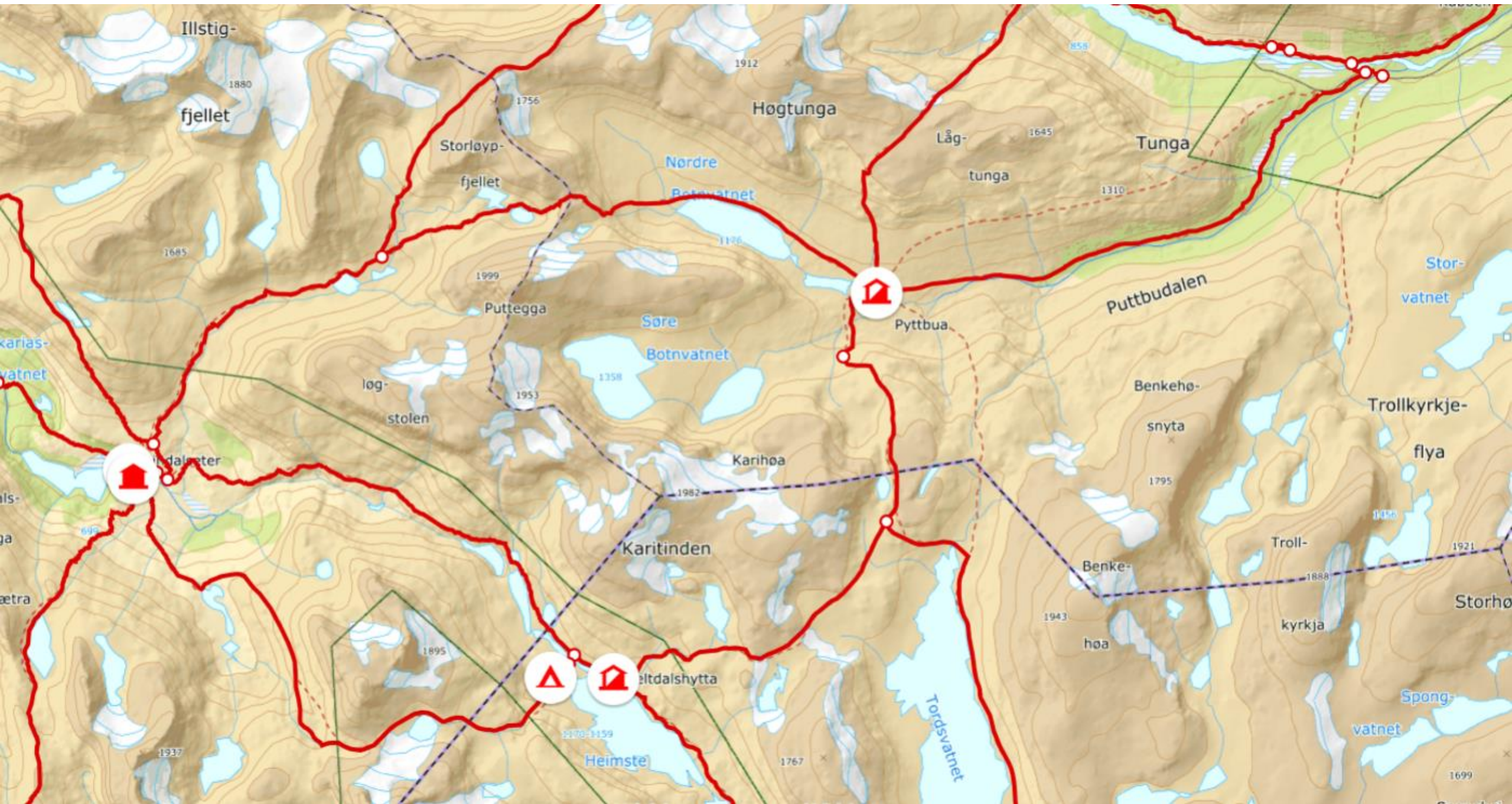
Dombås

Doyri

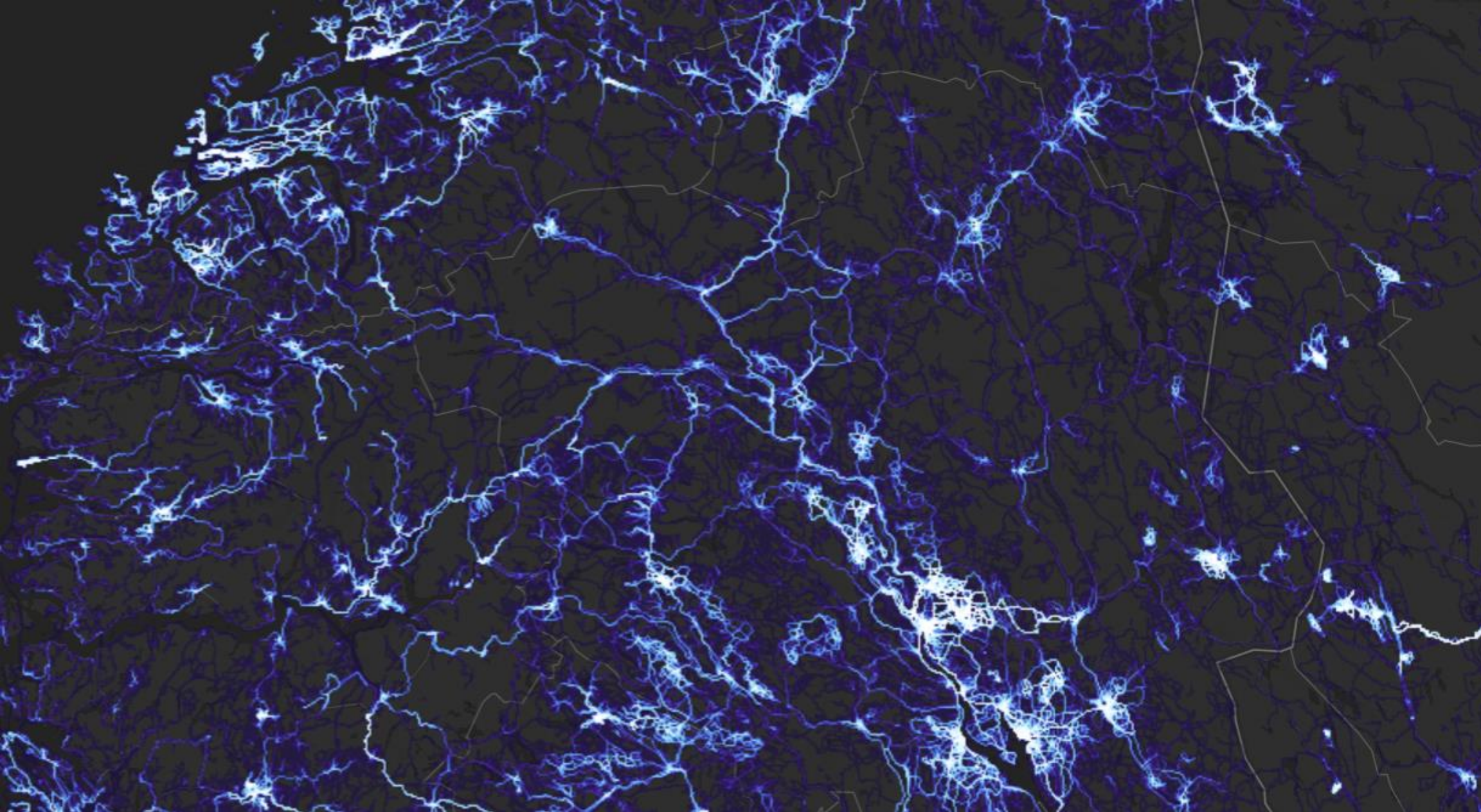
Lom



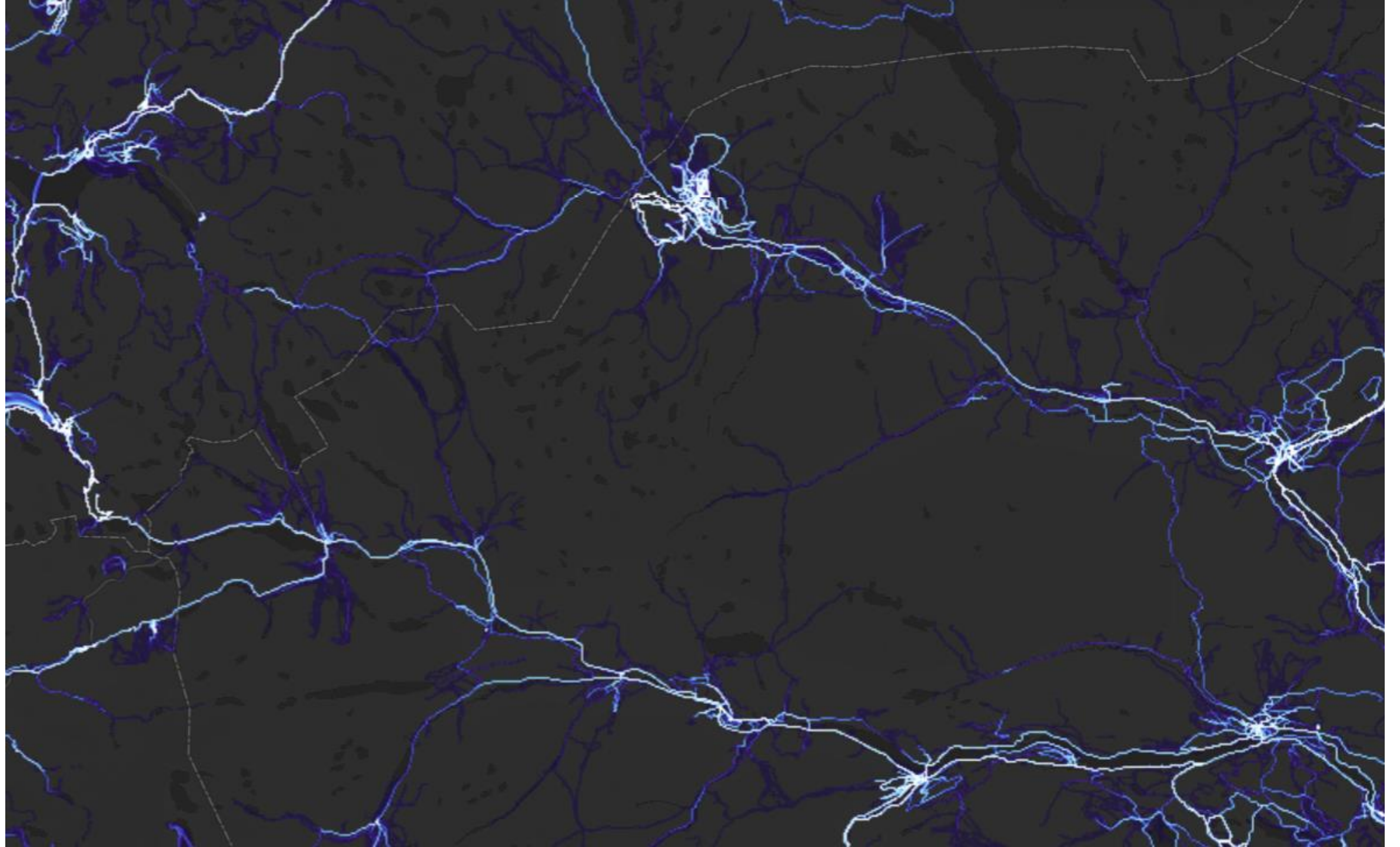




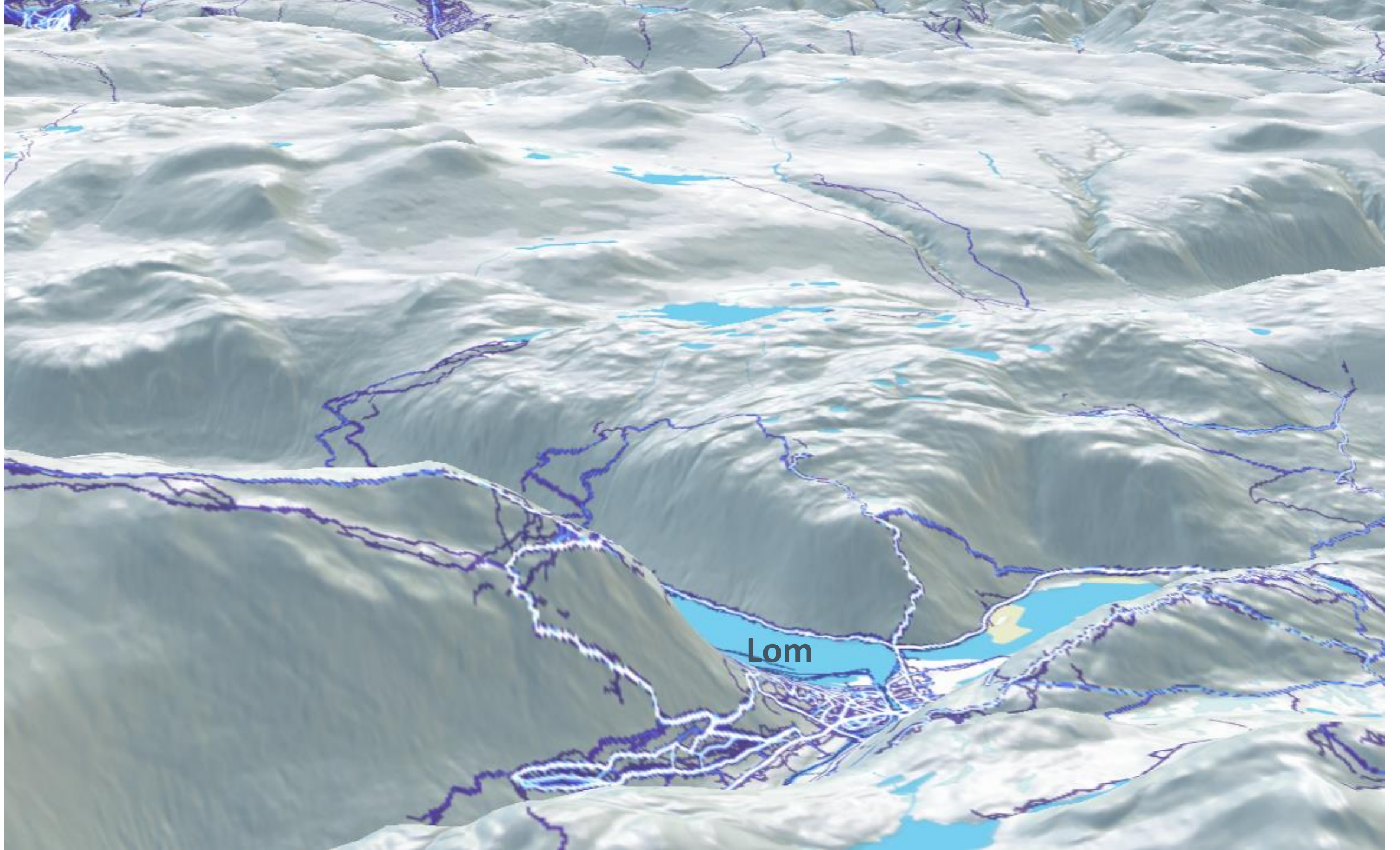






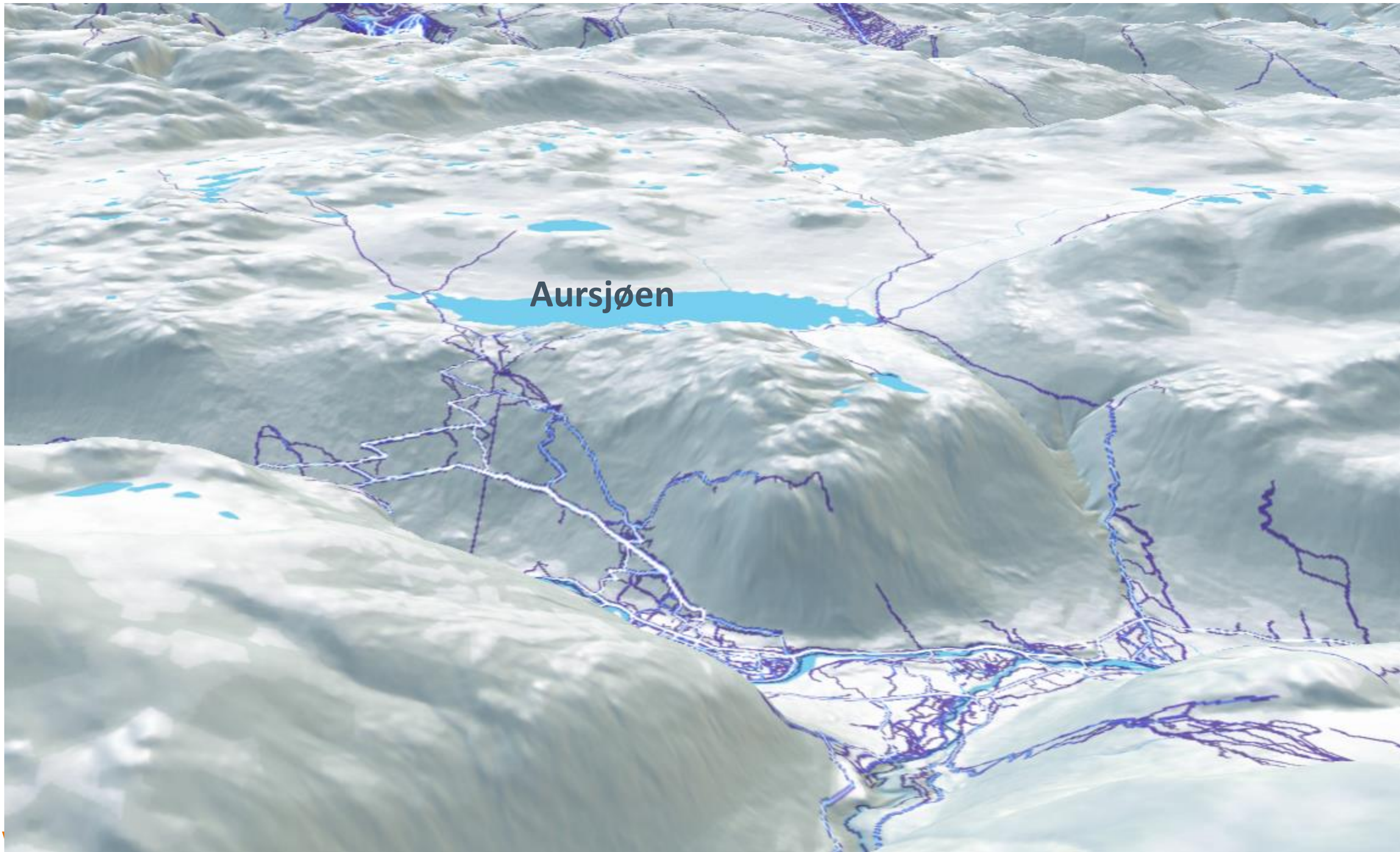






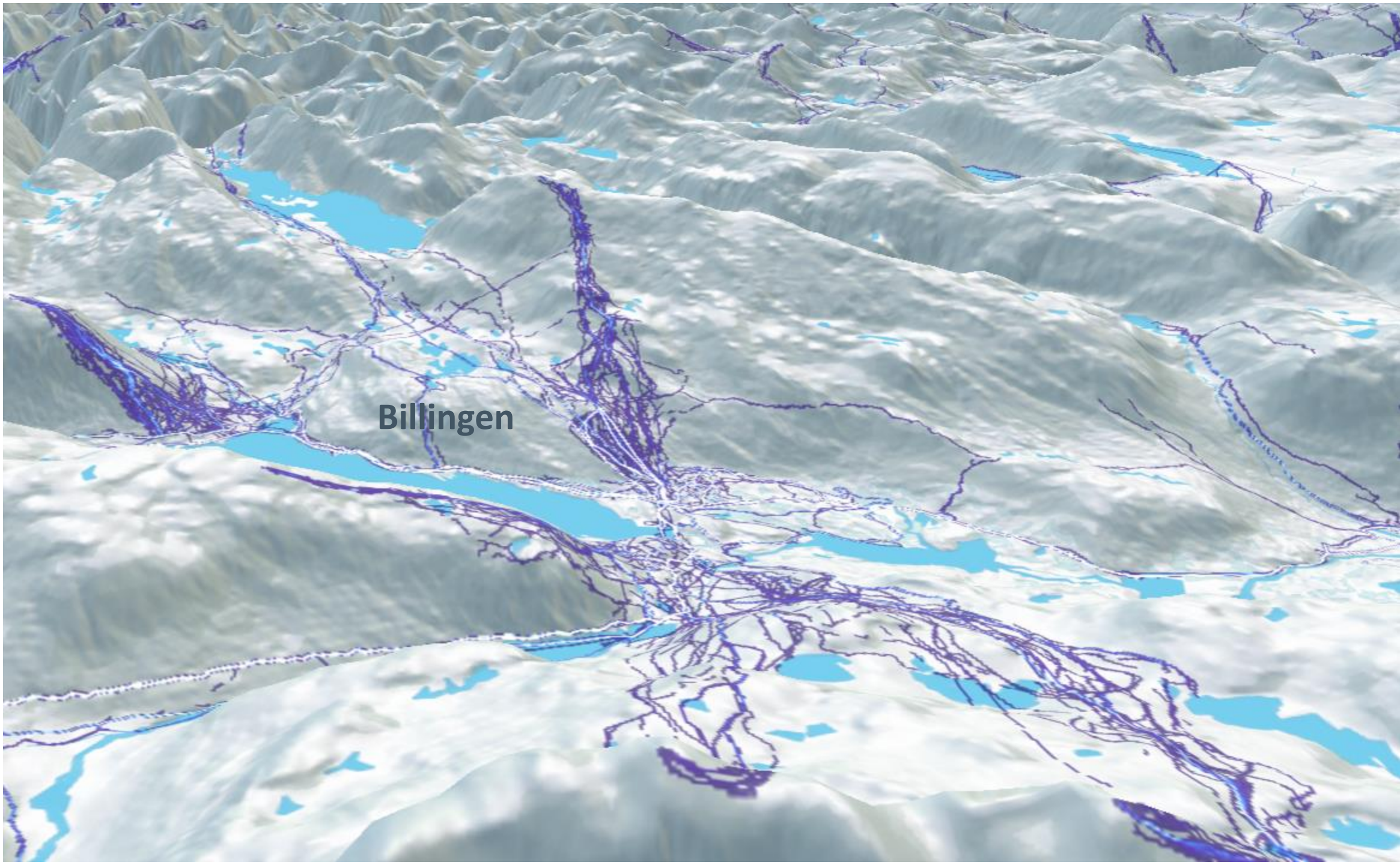
Lom





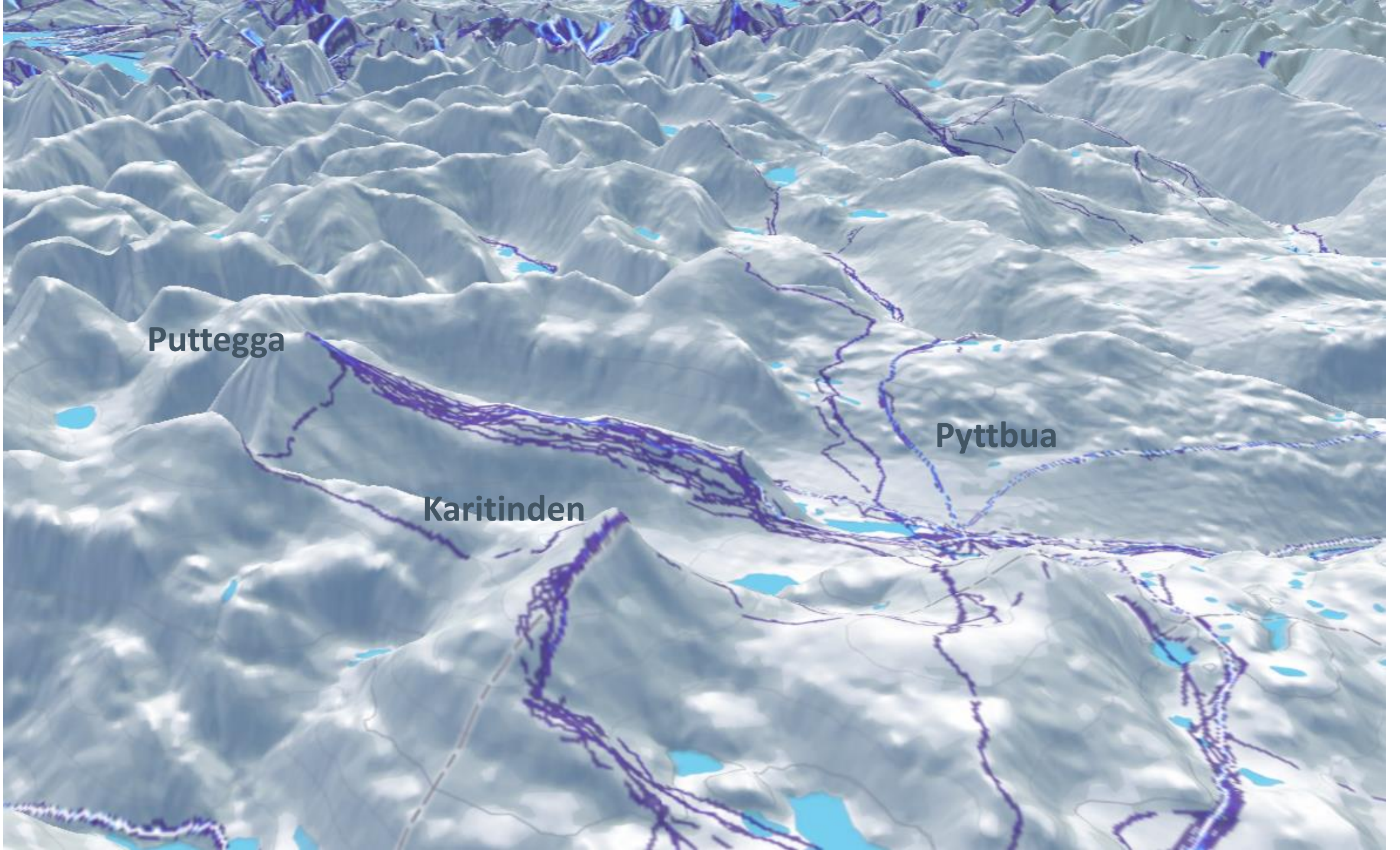
**Aursjøen**





**Billingen**





**Puttegga**

**Pyttbua**

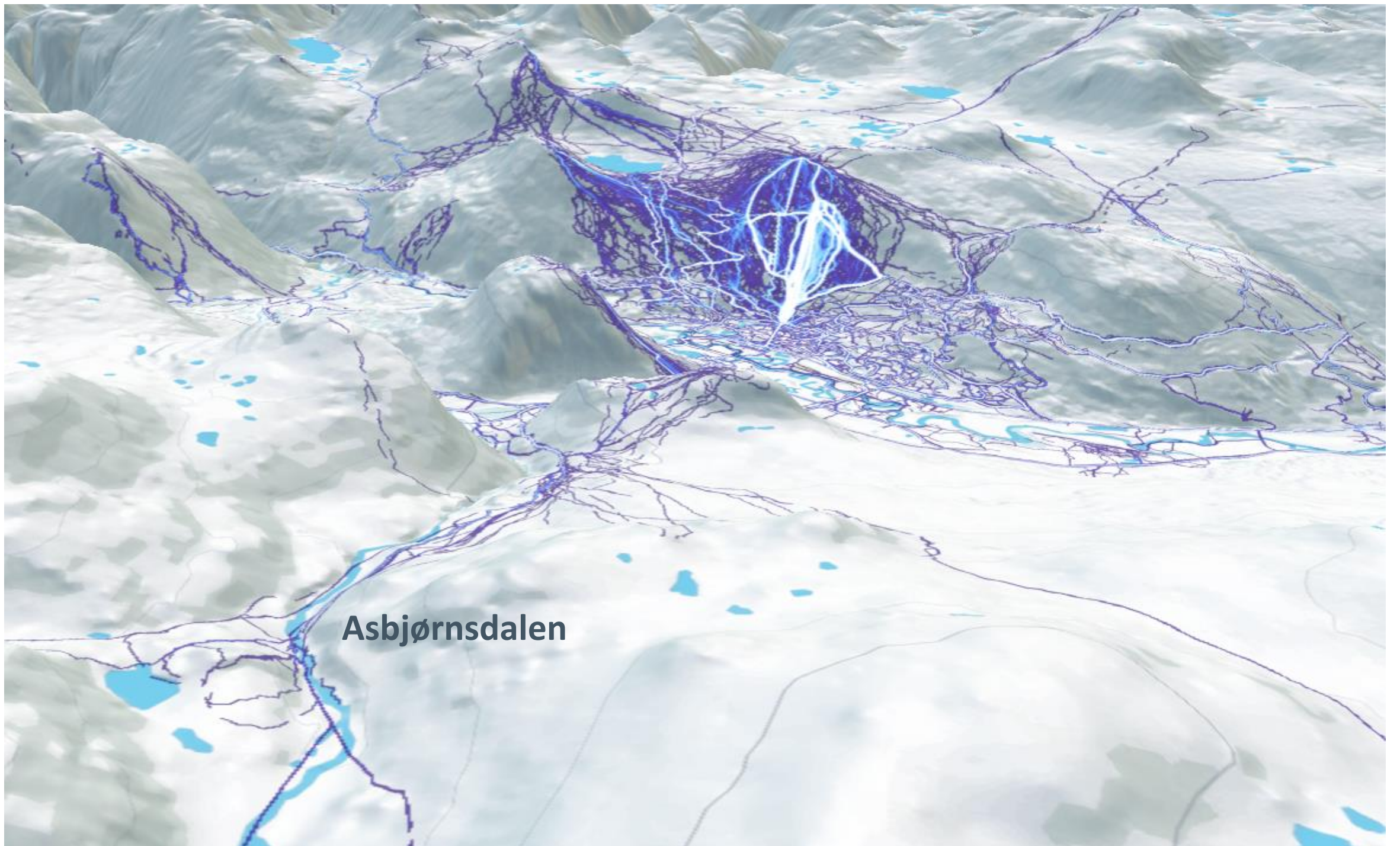
**Karitinden**





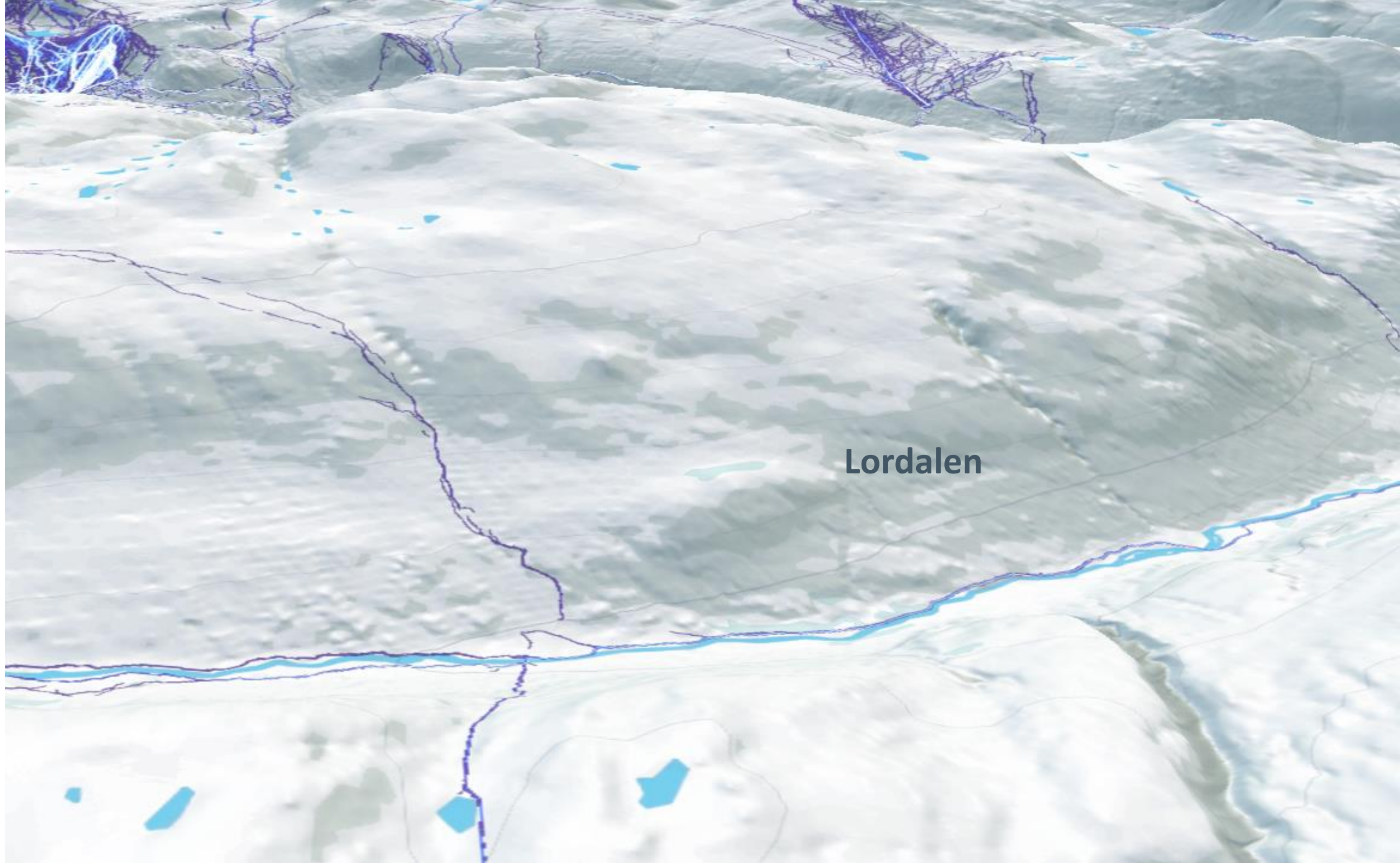
Trollstigen





**Asbjørnsdalen**





Lordalen

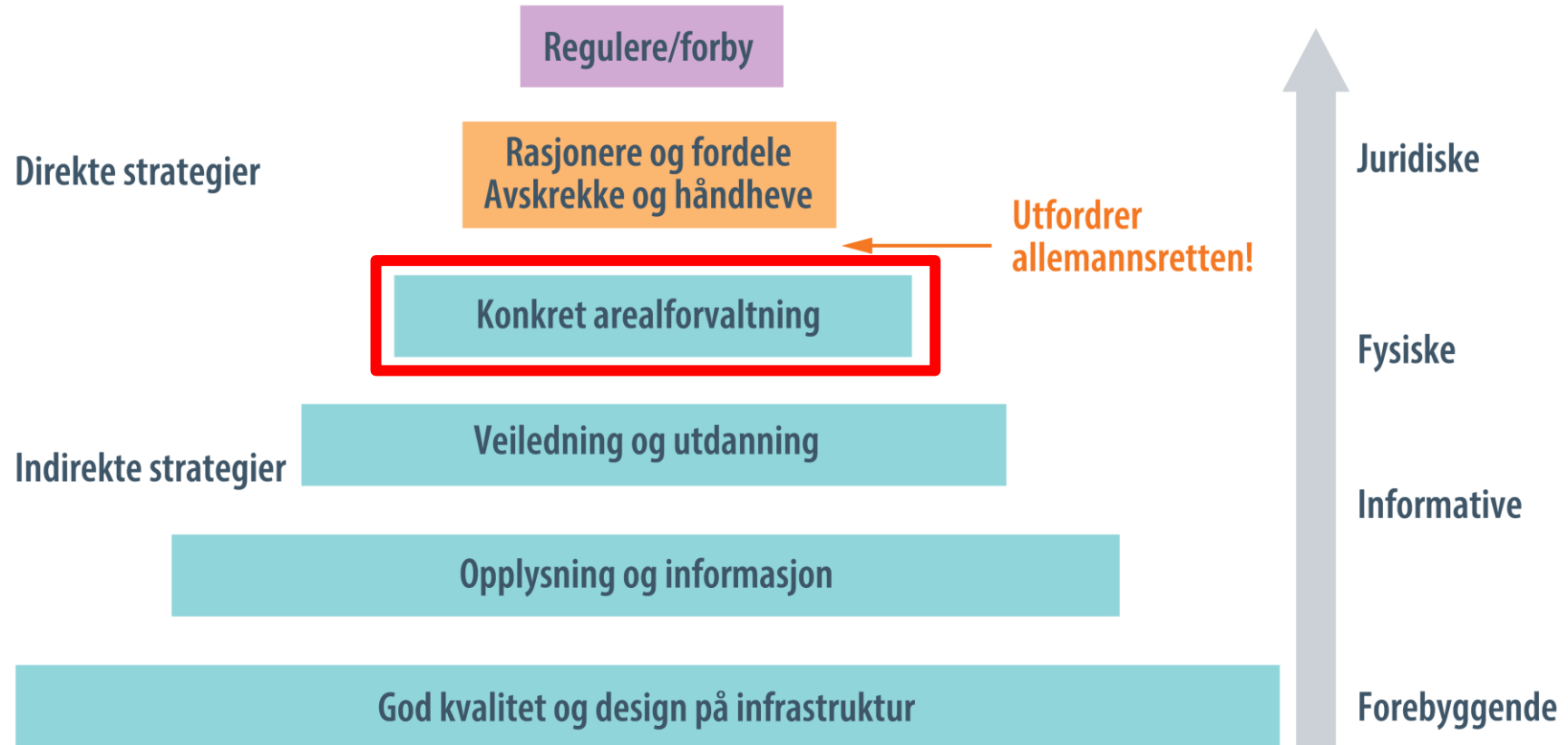


A 3D topographic map of a mountainous region. The terrain is rendered in shades of light blue and white, with darker blue indicating lower elevations. A prominent river system is shown in a bright cyan color, flowing from the upper left towards the lower right. Several lakes of varying sizes are scattered across the landscape, also in cyan. A network of purple lines, likely representing roads or trails, is overlaid on the terrain. The word "Finndalen" is printed in a bold, black, sans-serif font in the center-right portion of the image.

**Finndalen**



# Virkemidler for å påvirke ferdsel / atferd





Villreinen i Reinheimen er ganske robust med tanke på forstyrrelse og Reinheimen har forholdsvis lav grad av forstyrrelse sommer og vinter.

Besøksforvaltning handler i stor grad om å håndtere dagstur-turisme i eller utenfor randsonen.